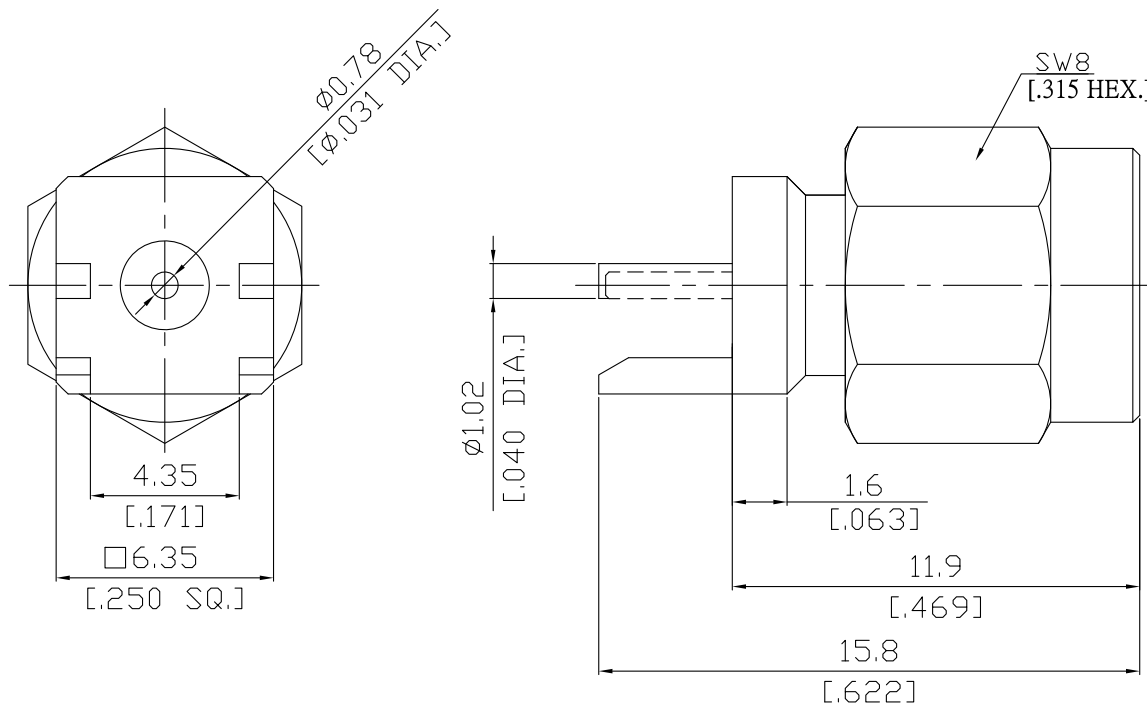


SMA Plug (male) Straight PCB End Launch Connector
Teflon Design DC-18GHz

SMA1H1A50-0173A / 111



All dimensions are in mm [inch]

Tolerances according to DIN ISO 2768-mH

Interface

According to

IEC 60169-15; MIL-STD-348B/310

Electrical Data

Impedance	50 Ω	
Frequency	DC to 18 GHz	
VSWR (Return Loss)	≤ 1.20 (≥ 20.83 dB) @ 6 GHz	≤ 1.30 (≥ 17.69 dB) @ 18 GHz
Insertion loss	≤ 0.03 x √F (GHz) dB	
Insulation resistance	≥ 5 GΩ	
Center contact resistance	≤ 3 mΩ	
Outer contact resistance	≤ 2 mΩ	
Test voltage	1000 V rms	
Working voltage	480 V rms	
Power handling	≤ 200 W @ 2 GHz	≤ 100 W @ 10 GHz
RF-leakage	≥ 100 dB up to 1 GHz	

Material And Plating

Connector parts	Material	Plating
Centre contact	Brass	Gold plating, 3 μinch (Non-magnetic nickel-phosphorus underplating, 80 μinch)
Body	Brass	Gold plating, 3 μinch (Non-magnetic nickel-phosphorus underplating, 80 μinch)
Insulator	PTFE	
Gasket	Silicone Rubber	
Coupling nut	Brass	Gold plating, 3 μinch (Non-magnetic nickel-phosphorus underplating, 80 μinch)

SMA Plug (male) Straight PCB End Launch Connector
Teflon Design DC-18GHz

SMA1H1A50-0173A / 111

Mechanical Data

Coupling mechanisms	Screw-lock
Mating cycles	min. 500
Center contact captivation: axial	≥ 20 N
Board mounting type	End Launch
Coupling test torque	max. 1.7 Nm
Recommended torque	0.8 Nm to 1.1 Nm

Environmental Data

Temperature Range	-65°C to +165°C
Thermal shock	MIL-STD-202, Meth. 107, Cond. B
Corrosion	MIL-STD-202, Meth. 101, Cond. B
Vibration	MIL-STD-202, Meth. 204, Cond. D
Shock	MIL-STD-202, Meth. 213, Cond. I
Moisture resistance	MIL-STD-202, Meth. 106
RoHS	compliant

Packing

Single or 100