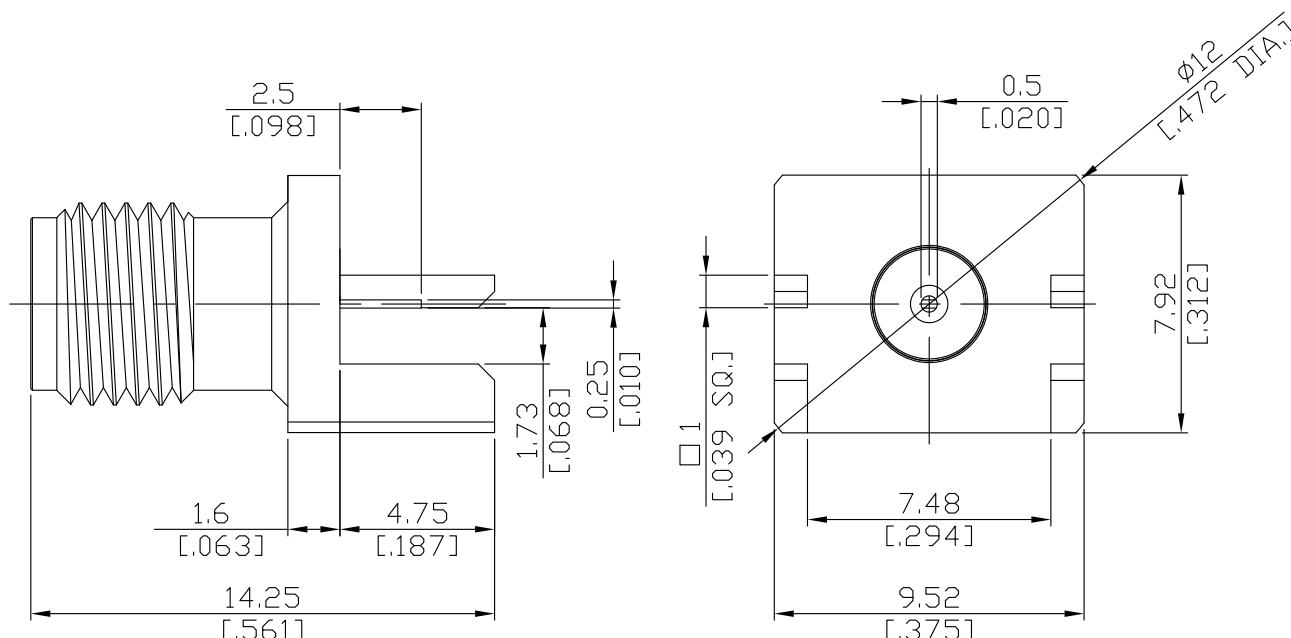


3.5mm Jack (female) Connector Straight PCB End Launch Mount
DC-20GHz With Flat PIN

PC2H2B50-0173A / 91



All dimensions are in mm [inch]

Tolerances according to DIN ISO 2768-mH

Interface

According to

IEC 60169-23

Electrical Data

Impedance

50 Ω

Frequency

DC to 20 GHz

VSWR (Return Loss)

≤ 1.3 (≥ 17.69 dB)

Mechanical Data

Coupling mechanisms

Screw-lock

Board mounting type

End Launch

Weight

0.0012 kg

Environmental Data

Temperature Range

-55°C to +90°C

RoHS

compliant

Material And Plating

Connector parts	Material	Plating
Centre contact	Beryllium Copper	Gold plating, 3 μinch (Non-magnetic nickel-phosphorus underplating, 80 μinch)
Body	Brass	Gold plating, 3 μinch (Non-magnetic nickel-phosphorus underplating, 80 μinch)
Insulator	PS	

Packing

Single or 100