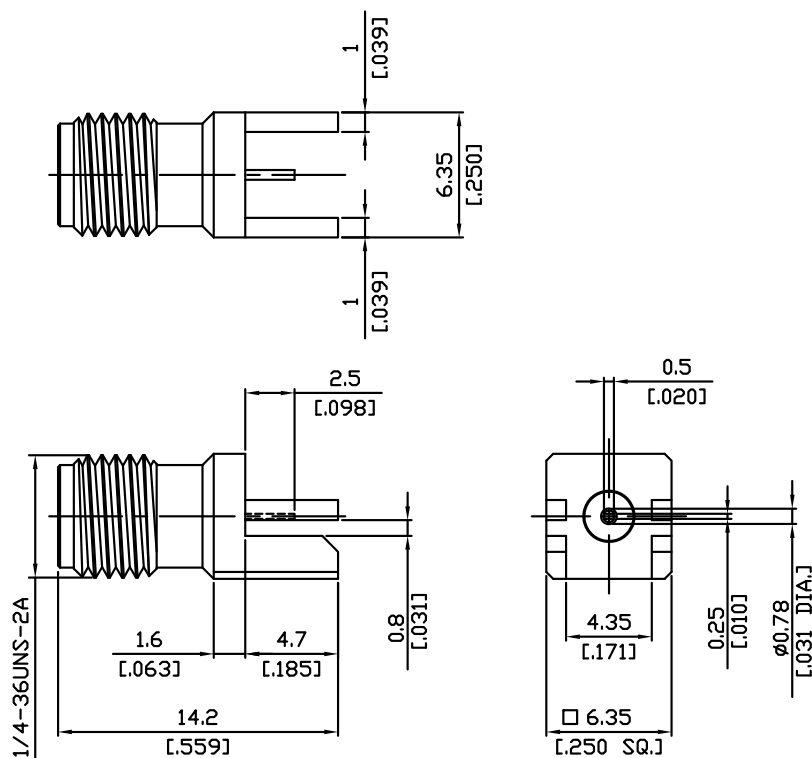


3.5mm Jack (female) Connector Straight PCB End Launch Mount
DC-26.5GHz With Flat PIN

PC2H2B50-0080A / 91



All dimensions are in mm [inch]

Tolerances according to DIN ISO 2768-mH

Interface

According to IEC 60169-23

Electrical Data

Impedance 50 Ω

Frequency DC to 26.5 GHz

VSWR (Return Loss) ≤ 1.3 (≥ 17.69 dB)

Mechanical Data

Coupling mechanisms Screw-lock

Board mounting type End Launch

Weight 0.0012 kg

Environmental Data

Temperature Range -55°C to $+90^{\circ}\text{C}$

RoHS compliant

Material And Plating

Connector parts	Material	Plating
Centre contact	Beryllium Copper	Gold plating, 3 μinch (Non-magnetic nickel-phosphorus underplating, 80 μinch)
Body	Brass	Gold plating, 3 μinch (Non-magnetic nickel-phosphorus underplating, 80 μinch)
Insulator	PS	

Packing

Single or 100