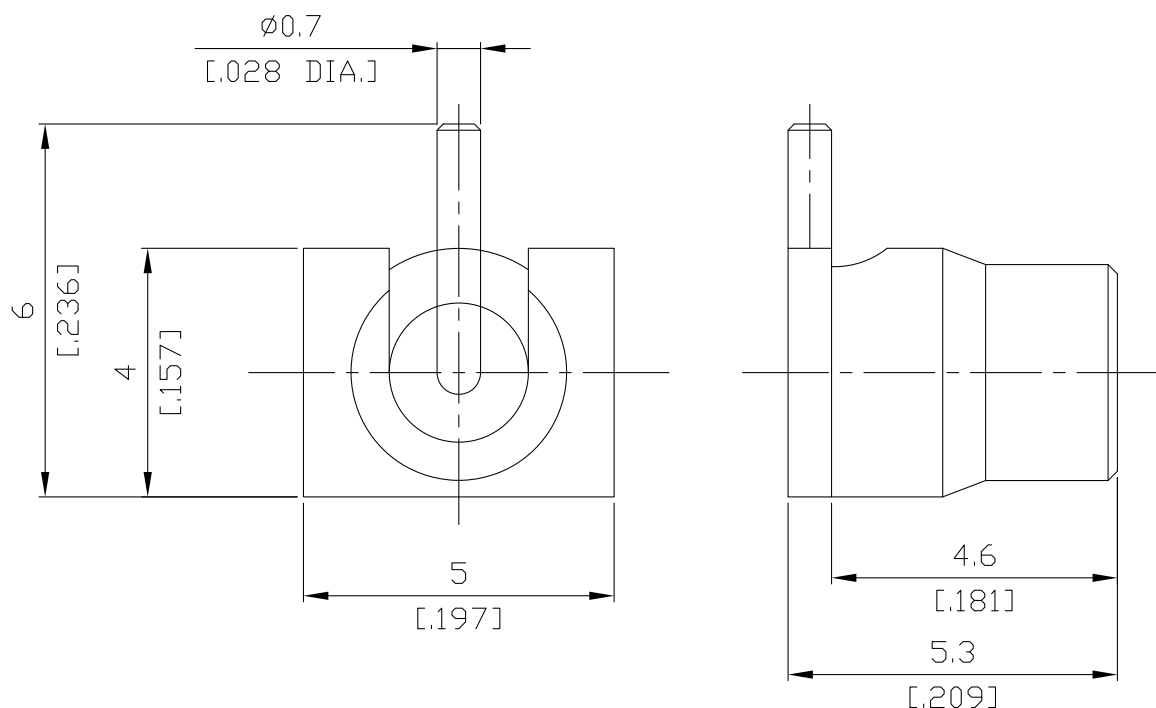


MMCX / STRAIGHT JACK(Female) RECEPTACLE FOR PCB SMT TYPE
DC-6 GHz

MMCX2N50-0600A / 93



All dimensions are in mm [inch]

Interface

According to N/A

Electrical Data

Impedance 50 Ω
Frequency DC to 6 GHz

Mechanical Data

Coupling mechanisms Snap-lock
Board mounting type SMT
Weight 0.0003 kg

Environmental Data

Temperature range -55°C to +155°C
RoHS compliant

Material And Plating

Connector parts	Material	Plating
Centre contact	Beryllium Copper	Gold plating, 3 μinch (Non-magnetic nickel-phosphorus underplating, 80 μinch)
Body	Brass	Nickel
Insulator	PTFE	

MMCX / STRAIGHT JACK(Female) RECEPTACLE FOR PCB SMT TYPE DC-6 GHz

MMCX2N50-0600A / 93

Mechanical Data

Coupling mechanisms	Snap-lock
Mating Cycles	≥ 500
Engagement Force	≤ 25 N
Disengagement Force	8 N (min.) - 20 N (max.)
Center Contact Captivation	≥ 10 N
Recommended Torque	N/A
Coupling Test Torque	N/A

Environmental Data

Temperature Range	-55°C to +155°C
Thermal shock	MIL-STD-202, Meth. 107, Cond. B
Vibration	MIL-STD-202, Meth. 204, Cond. D
Shock	MIL-STD-202, Meth. 213, Cond. I
RoHS	compliant

Packing

Single or 100