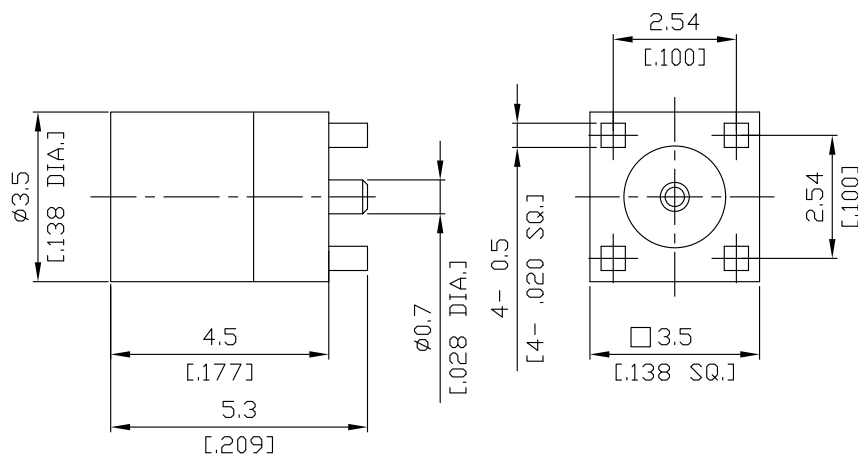
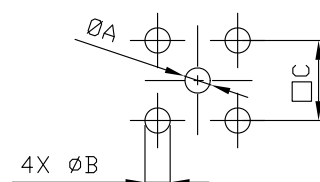


MMCX / Straight Jack (Female) Receptacle for PCB SMT Type DC-6 GHz

MMCX2N50-0521A / 91



Mounting Dimension



	mm		inch	
	Max.	Min.	Max.	Min.
A	1.05	0.95	0.041	0.037
B	0.9	0.8	0.035	0.031
C	2.56	2.52	0.101	0.099

All dimensions are in mm [inch]

Tolerances according to DIN ISO 2768-mH

Interface

According to

IEC 61169-52

Electrical Data

Impedance	50 Ω
Frequency	DC to 6 GHz
VSWR (Return Loss)	≤ 1.40 (≥ 15.56 dB)
Insertion Loss	$\leq 0.1 \times \sqrt{F}$ (GHz) dB
Insulation Resistance	≥ 500 M Ω
Center Contact Resistance	≤ 10 m Ω
Outer Contact Resistance	≤ 5 m Ω
Test Voltage (at sea level)	500 V rms
Working Voltage (at sea level)	170 V rms
Power Handling	≤ 63 W @ 1 GHz

-VSWR in application depends decisive on PCB layout or cavity design-

Material And Plating

Piece Parts	Material	Plating
Centre Contact	Beryllium Copper	Gold plating (Non-magnetic nickel-phosphorus underplating)
Body	Brass	Gold plating (Non-magnetic nickel-phosphorus underplating)
Insulator	PTFE	

MMCX / Straight Jack (Female) Receptacle for PCB SMT Type DC-6 GHz

MMCX2N50-0521A / 91

Mechanical Data

Coupling mechanisms	Snap-lock
Mating Cycles	≥ 500
Engagement Force	≤ 15 N
Disengagement Force	6 N to 15 N
Center Contact Captivation	≥ 7 N
Recommended Torque	N/A
Coupling Test Torque	N/A

Environmental Data

Temperature Range	-55°C to +155°C
Thermal shock	MIL-STD-202, Meth. 107, Cond. F
Vibration	MIL-STD-202, Meth. 204, Cond. C
Moisture resistance	MIL-STD-202, Meth. 206
Corrosion	MIL-STD-202, Meth. 101, Cond. B
RoHS	compliant

Packing

Tape and Reel package