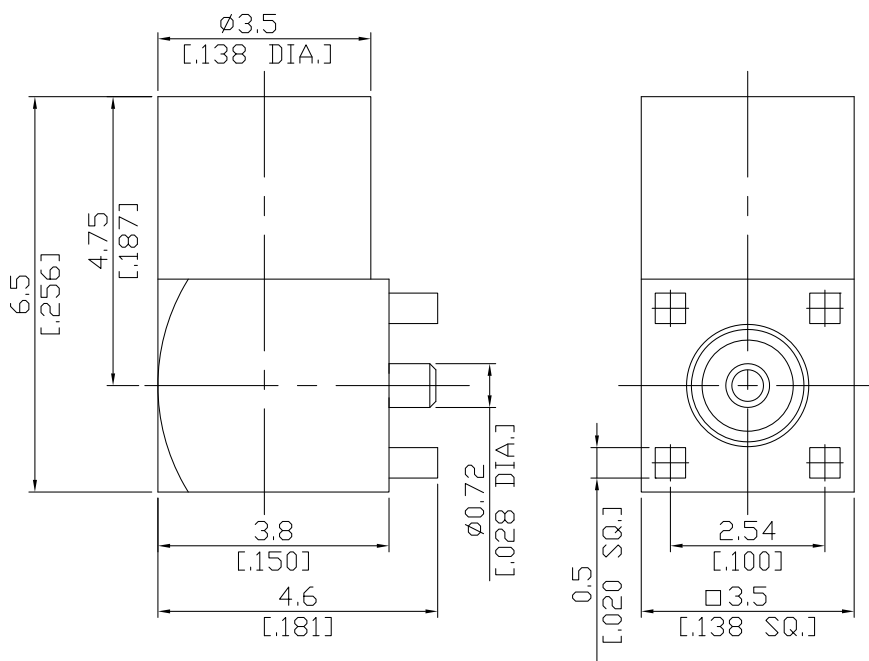


MMCX Jack(female) PCB Through Holes Right Angle

MMCX2I59-0650C / H1



All dimensions are in mm [inch]

Interface

According to N/A

Electrical Data

Impedance 50 Ω
Frequency DC to 6 GHz

Mechanical Data

Coupling mechanisms Snap-lock
Board mounting type Through Holes
Weight 0.0005 kg

Environmental Data

Temperature range -55°C to +155°C
RoHS compliant

Material And Plating

Connector parts	Material	Plating
Centre contact	Phosphor Bronzer	Gold plating(Nickel underplated)
Body	Brass	Gold plating(Nickel underplated)
Insulator	PTFE	

Packing

Single or 100

Related Document

Mounting Dimension MD91