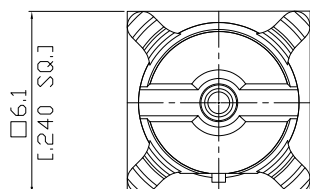
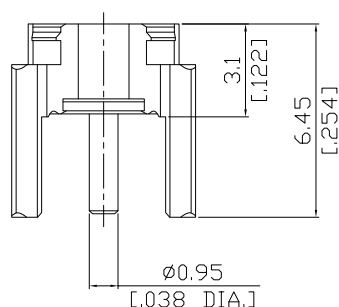


MMBX PCB Jack(female) PCB Through Holes Straight

MMBX2I50-0645A / 11



Recommended mounting dimensions



All dimensions are in mm [inch]

Tolerances according to DIN ISO 2768-mH

Interface

According to N/A

Electrical Data

Impedance 50 Ω

Frequency DC to 12.4 GHz

VSWR (Return Loss) DC to 6 GHz: ≤ 1.15 (≥ 23.13 dB)

Insertion Loss ≤ 0.12 x √F [GHz] dB

- Electrical performance guaranteed for connector only -

Mechanical Data

Coupling mechanisms Snap-lock

Board mounting type Through Holes

Weight N/A

Environmental Data

Temperature range -55°C to +155°C

RoHS compliant

Material And Plating

Connector parts	Material	Plating
Centre contact	Brass	Gold plating(Nickel underplated)
Body	Brass	Gold plating(Nickel underplated)
Insulator	PTFE	

Packing

Single or 100