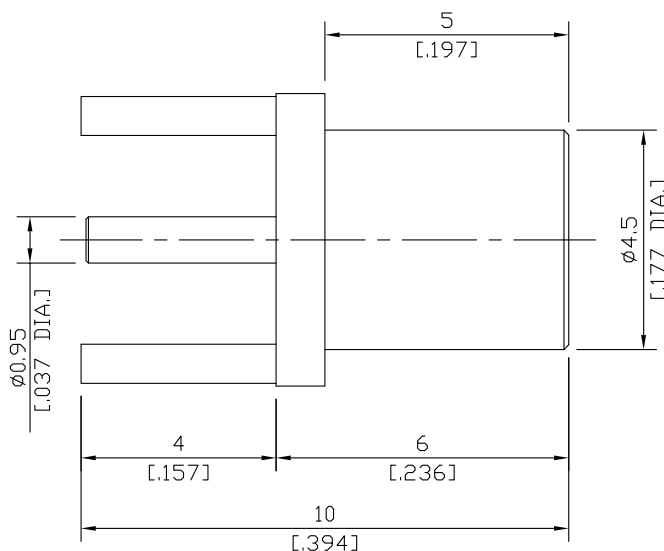
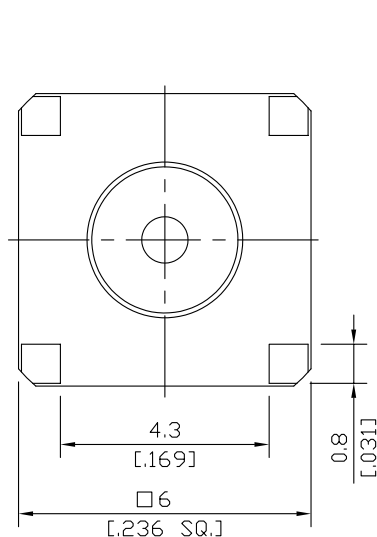


MCX (Female) Straight PCB Jack

MCX2I50-1000A/H1



All dimensions are in mm [inch]

Tolerances according to DIN ISO 2768-mH

Interface

According to IEC 60169-36

Electrical Data

Impedance 50 Ω
Frequency DC to 6 GHz

Mechanical Data

Coupling mechanisms Snap-lock
Board mounting type Through Holes
Weight N/A

Environmental Data

Temperature range -55°C to +155°C
RoHS compliant

Material And Plating

| Connector parts | Material | Plating |
|-----------------|-----------------|----------------------------------|
| Centre contact | Phosphor Bronze | Gold plating(Nickel underplated) |
| Body | Brass | Gold plating(Nickel underplated) |
| Insulator | PTFE | |

Packing

Single or 100

Related Document

Mounting Dimension MD81