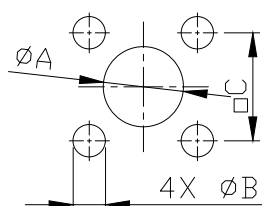


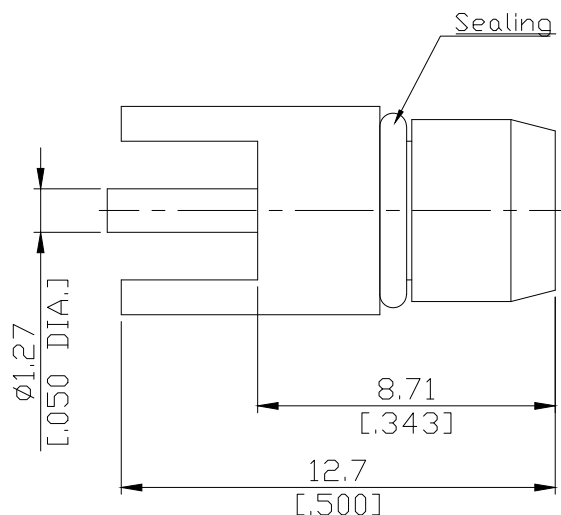
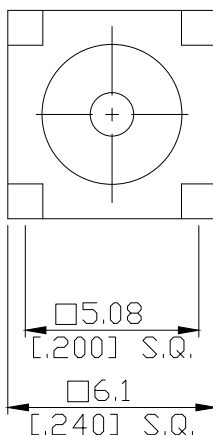
BMA Plug (male) Connector Solder Attachment
PCB Through Holes Straight, DC-18 GHz, VSWR ≤ 1.3

BMA1I50-1270A / 1Q

Mounting Dimensions



	mm		inch	
	Max.	Min.	Max.	Min.
A	1.47	1.37	0.058	0.054
B	1.56	1.46	0.061	0.057
C	6.15	6.05	0.242	0.238



All dimensions are in mm [inch]

Tolerances according to DIN ISO 2768-mH

Interface

According to

IEC 60169-33; MIL-STD-348B/321

Electrical Data

Impedance

50 Ω

Frequency

DC to 18 GHz

VSWR (Return Loss)

≤ 1.3 (≥ 17.7 dB)

Insertion Loss

≤ 0.04 × √F (GHz) dB

Insulation Resistance

≥ 5 GΩ

Test Voltage

1000 V rms

Working Voltage (at sea level)

400 V rms

RF-leakage

85 dB up to 1 GHz

Material And Plating

Connector parts	Material	Plating
Centre contact	Brass	Gold plating, 3 μinch (Non-magnetic nickel-phosphorus underplating, 80 μinch)
Body	Stainless Steel	Gold plating, 3 μinch (Non-magnetic nickel-phosphorus underplating, 80 μinch)
Insulator	PTFE	
Gasket	Silicone Rubber	

BMA Plug (male) Connector Solder Attachment
PCB Through Holes Straight, DC-18 GHz, VSWR ≤ 1.3

BMA1I50-1270A / 1Q

Mechanical Data

Coupling mechanisms	Slide-lock
Mating cycles	min. 500
Center contact captivation: axial	≥ 27 N
Board mounting type	Through Holes
Engagement force	≤ 13.5 N
Disengagement force	≥ 2 N

Environmental Data

Temperature Range	-65°C to +165°C
Thermal shock	MIL-STD-202, Meth. 107, Cond. B
Corrosion	MIL-STD-202, Meth. 101, Cond. B
Vibration	MIL-STD-202, Meth. 204, Cond. D
Shock	MIL-STD-202, Meth. 213, Cond. I
Moisture Resistance	MIL-STD-202, Meth. 106
RoHS	compliant

Packing

Single or 100