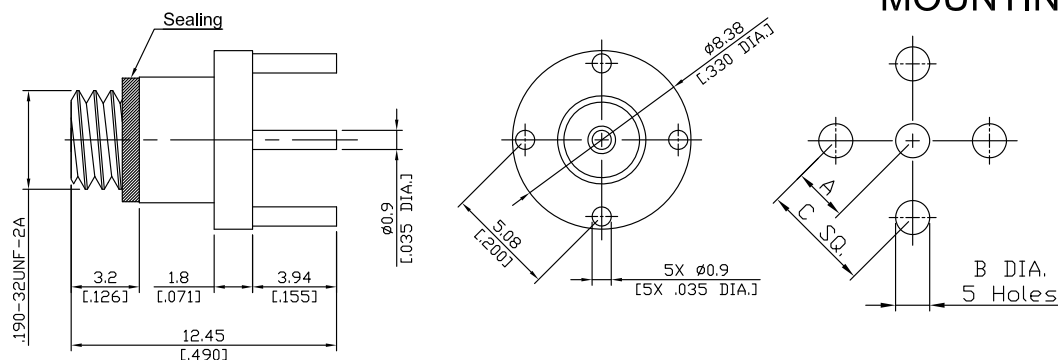


10-32 Jack (Female) PCB Thru Hole Connector Solder Attachment 4X 5.1mm [4X .200 inch] Mounting Dimension
5X 1.2mm [5X .047 inch] Hole Spacing DC-2GHz

1032-2I50-1245A / H1

MOUNTING DIMENSIONS



	mm		inch	
	MAX.	MIN.	MAX.	MIN.
A	2.57	2.55	.101	.100
B	1.4	1.2	.067	.063
C	5.13	5.10	.202	.200

All dimensions are in mm [inch]

Tolerances according to DIN ISO 2768-mH

Interface

According to

N/A

Electrical Data

Impedance

50 Ω

Frequency

DC to 2 GHz

Material And Plating

Piece Parts	Material	Plating
Centre Contact	Phosphor Bronze	Gold plating, 3 μinch (Non-magnetic nickel-phosphorus underplating, 80 μinch)
Body	Brass	Gold plating, 3 μinch (Non-magnetic nickel-phosphorus underplating, 80 μinch)
Insulator	PTFE	
Gasket	Silicone Rubber	

Mechanical Data

Coupling Mechanisms

Screw-Lock

Mating Cycles

≥ 500

Centre Contact

Soldered

Cable Entry

Clamp

Environmental Data

Temperature Range

-55°C to +155°C

RoHS

compliant

Packing

Single or 100

Weight

N/A