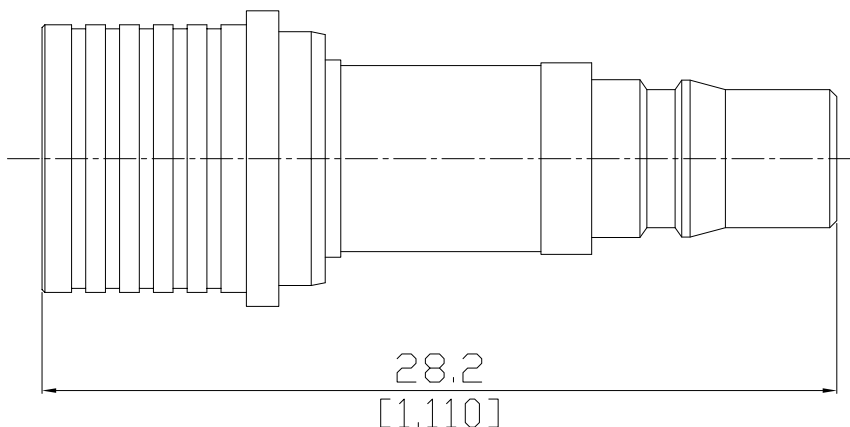


Fixed Attenuator plug/jack
QMA plug (male) / QMA jack (female)

FA-QA1QA25A-3G2W8/944-94



All dimensions are in mm [inch]

Tolerances according to DIN ISO 2768-mH

Interface

According to IEC 61169-50

Electrical Data

Impedance 50 Ω
Frequency DC to 3 GHz
VSWR (Return Loss) ≤ 1.25 (≥ 19.08 dB)
Power rating 2 Watt average power up to 25 °C

Maximum Deviation Over Frequency

Nominal ATTN (dB)	Deviation (dB)
1-10	± 0.4
11-30	± 0.5

Mechanical Data

Coupling mechanisms Quick-lock
Weight N/A

Environmental Data

Temperature range -55°C to +130°C
RoHS compliant

Material And Plating

Piece Parts (QMA)	Material	Plating
Centre contact	Beryllium Copper	Gold plating (Nickel underplated)
Body	Brass	Copper-Tin-Zinc Alloy
Insulator	PTFE	
Piece Parts (QMA)	Material	Plating
Centre contact	Beryllium Copper	Gold plating (Nickel underplated)
Body	Brass	Copper-Tin-Zinc Alloy
Insulator	PTFE	

Packing

Single or 100