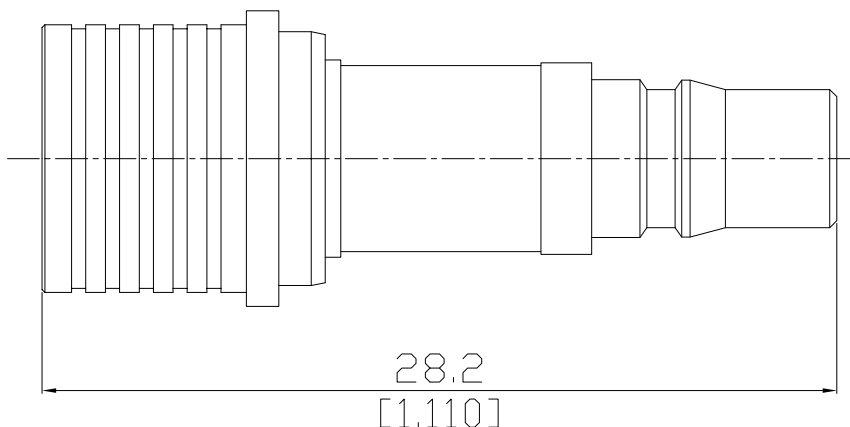


Fixed Attenuator plug/jack  
QMA plug (male) / QMA jack (female)

FA-QA1QA25A-3G2W3/944-94



All dimensions are in mm [inch]

Tolerances according to DIN ISO 2768-mH

#### Interface

According to IEC 61169-50

#### Electrical Data

Impedance 50  $\Omega$   
Frequency DC to 3 GHz  
VSWR (Return Loss)  $\leq 1.25$  ( $\geq 19.08$  dB)  
Power rating 2 Watt average power up to 25 °C

#### Maximum Deviation Over Frequency

Nominal ATTN (dB)	Deviation (dB)
1-10	$\pm 0.4$
11-30	$\pm 0.5$

#### Mechanical Data

Coupling mechanisms Quick-lock  
Weight N/A

#### Environmental Data

Temperature range -55°C to +130°C  
RoHS compliant

#### Material And Plating

Piece Parts (QMA)	Material	Plating
Centre contact	Beryllium Copper	Gold plating (Nickel underplated)
Body	Brass	Copper-Tin-Zinc Alloy
Insulator	PTFE	
Piece Parts (QMA)	Material	Plating
Centre contact	Beryllium Copper	Gold plating (Nickel underplated)
Body	Brass	Copper-Tin-Zinc Alloy
Insulator	PTFE	

#### Packing

Single or 100