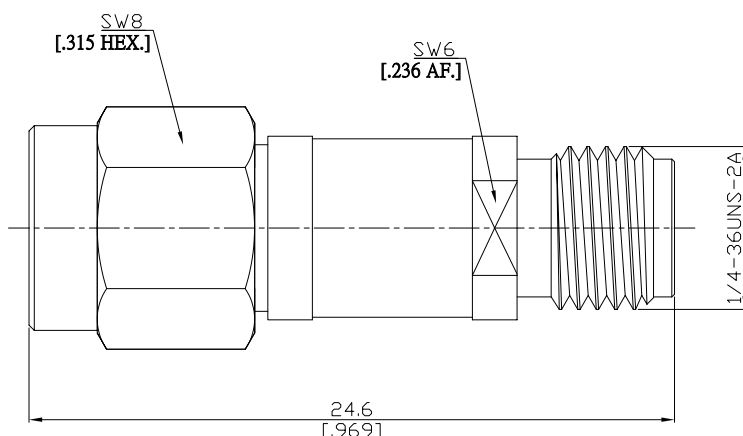


Fixed Attenuator SMA Male To SMA Female Up To 8 GHz Rated To 2 Watts

FA-A1A25A-8G2W17 / 911-91



All dimensions are in mm [inch]

Tolerances according to DIN ISO 2768-mH

Interface

According to

IEC 60169-15; MIL-C-39012; MIL-STD-348A/310

Electrical Data

Impedance

50 Ω

Frequency

DC to 8 GHz

VSWR (Return Loss)

≤ 1.30 (≥ 17.69 dB)

Input Power

2 Watts average to 25°C

Accuracy Of Attenuation & Power

Nominal ATTN (dB)	17		
Deviation (\pm dB)	0.7		

Material And Plating

Piece Parts	Material	Plating
Centre Contact	Beryllium Copper	Gold plating (Nickel underplated)
Body	Brass	Gold plating (Nickel underplated)
Insulator	PTFE	
Gasket	Silicone Rubber	
Coupling Nut	Brass	Gold plating (Nickel underplated)

Piece Parts	Material	Plating
Centre Contact	Beryllium Copper	Gold plating (Nickel underplated)
Body	Brass	Passivated
Insulator	PTFE	

Fixed Attenuator SMA Male To SMA Female Up To 8 GHz Rated To 2 Watts

FA-A1A25A-8G2W17 / 911-91

Mechanical Data

Coupling mechanisms	Screw-lock
Mating Cycles	≥ 500
Coupling Nut Retention	≥ 270 N
Center Contact Captivation: axial	≥ 20 N
Coupling Test Torque	1.70 Nm max.
Recommended Torque	0.8 Nm to 1.1 Nm

Environmental Data

Temperature Range	-55°C to + 125°C
Thermal shock	MIL-STD-202, Method 107, Condition B
Corrosion	MIL-STD-202, Method 101, Condition B
Vibration	MIL-STD-202, Method 204, Condition D
Shock	MIL-STD-202, Method 213, Condition I
Moisture Resistance	MIL-STD-202, Method 106
RoHS	compliant

Packing

Single or 100