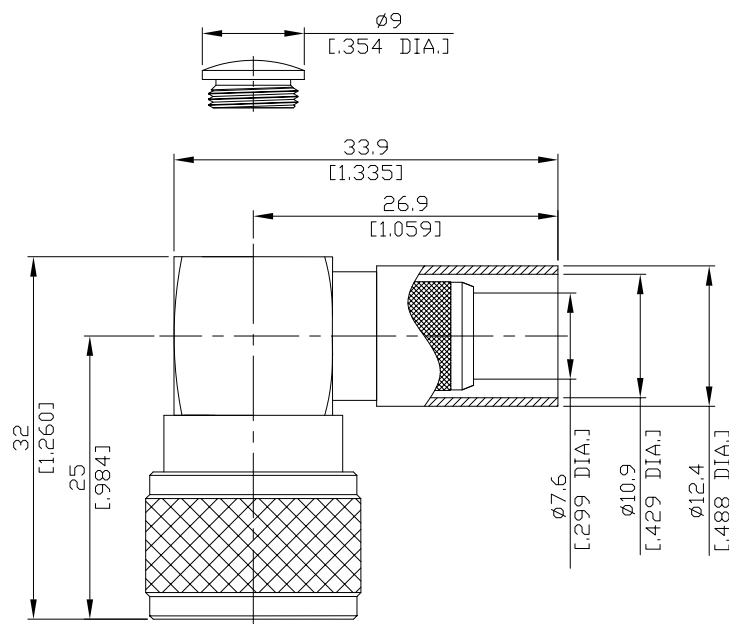




UHF Right Angle Cable Plug

UHF1CN9-R400A/H33



All dimensions are in mm [inch]

Tolerances according to DIN ISO 2768-mH

Interface

According to IEC 60169-12

Electrical Data

Impedance non-constant
Frequency DC to 300 MHz

- Limitations are possible due to the used cable type and manufacturing process -

Mechanical Data

Coupling mechanisms Screw-lock
Centre contact Soldered
Cable entry Crimped

Environmental Data

Temperature range -55°C to +149°C
RoHS compliant

Material And Plating

Connector parts	Material	Plating
Centre contact	Phosphor Bronze	Gold plating(Nickel underplated)
Body	Brass	Nickel
Insulator	PTFE	
Coupling nut	Brass	Nickel
Crimp ferrules	Brass	Nickel

Suitable Cables

LMR 400, TZC 50032, BELDEN 7810A, BELDEN 8214, BELDEN 9913, RNL-400

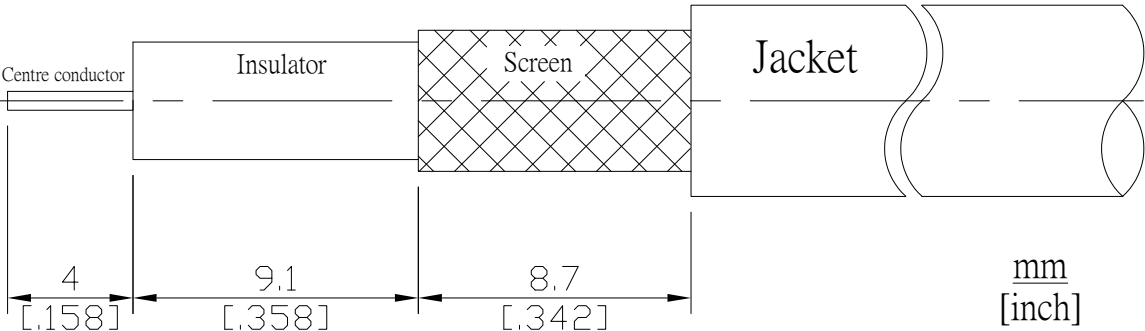
Packing

Single or 100

UHF Right Angle Cable Plug

UHF1CN9-R400A/H33

Recommended Cable Stripping Dimensions



Crimp Dimensions [HEX]

Crimp ferrule

10.90 mm [.429 inch]