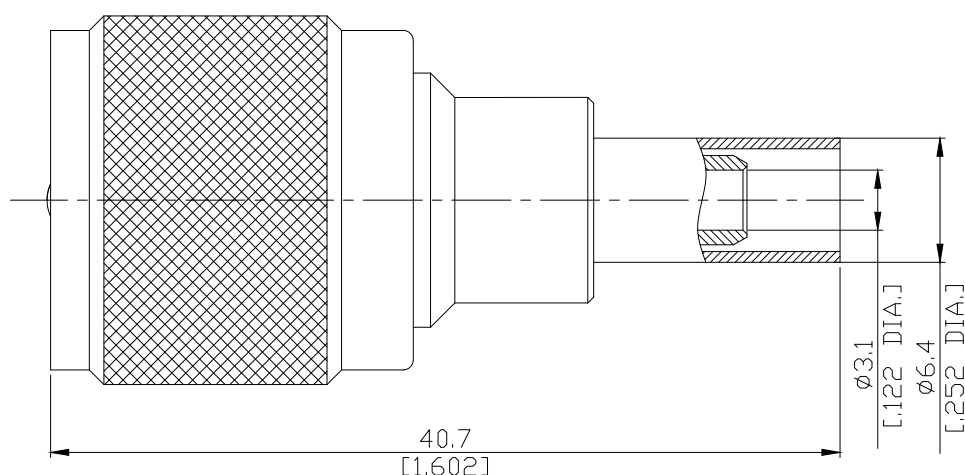


UHF Plug (Male) Straight Connector,  
Center Pin: Solder, Cable Entry: Crimp, DC-300 MHz

## UHF1CN0-G058A / 144



All dimensions are in mm [inch]

Tolerances according to DIN ISO 2768-mH

### Interface

According to IEC 61169-12

### Electrical Data

Impedance	Non-constant
Frequency	DC to 300 MHz
VSWR (Return Loss)	≤ 1.30 (≥ 17.69 dB)
Insertion Loss	≤ 1.22 (≥ 20 dB)
Insulation Resistance	≥ 5 GΩ
Center contact resistance	≤ 5 mΩ
Outer contact resistance	≤ 5 mΩ
Test Voltage (at sea level)	2000 V rms
Working Voltage (at sea level)	750 V rms

- Limitations are possible due to the used cable type -

### Material And Plating

Piece Parts	Material	Plating
Centre contact	Brass	Gold plating, 3 μinch (Non-magnetic nickel-phosphorus underplating, 80 μinch)
Body	Brass	Copper-Tin-Zinc Alloy
Insulator	PTFE	
Coupling nut	Brass	Copper-Tin-Zinc Alloy

UHF Plug (Male) Straight Connector,  
Center Pin: Solder, Cable Entry: Crimp, DC-300 MHz

## UHF1CN0-G058A / 144

### Mechanical Data

Coupling Mechanisms	Screw Lock
Mating Cycles	≥ 500
Center contact captivation: axial	≥ 30 N

### Environmental Data

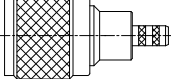
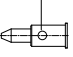
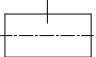
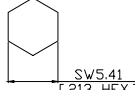
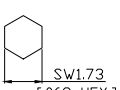
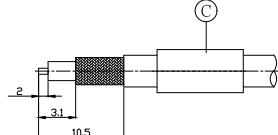
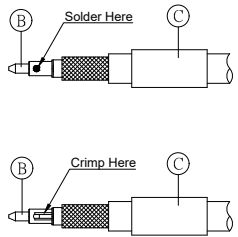
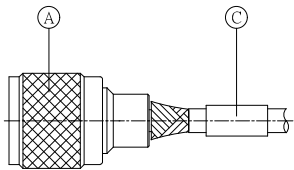
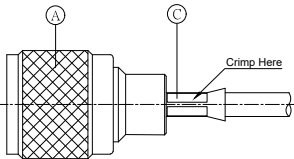
Temperature Range	-25°C to +70°C
Thermal Shock	MIL-STD-202, Method 107, Condition B
Corrosion	MIL-STD-202, Method 101, Condition B
Vibration	MIL-STD-202, Method 204, Condition B
Shock	MIL-STD-202, Method 213, Condition G
RoHS	compliant

### Packing

Single or 100

UHF Plug (Male) Straight Connector,  
Center Pin: Solder, Cable Entry: Crimp, DC-300 MHz

**UHF1CN0-G058A / 144**

Connector Type:	UHF1C50-G058A/144	Inner Conductor Contact:	Soldered or Crimped
Suitable Cable:	RG58, RG141	Outer Conductor Contact:	Crimped
<p>Parts List of Connector:</p> <div style="display: flex; justify-content: space-around; align-items: flex-end;"> <div style="text-align: center;"> <p>(A)</p>  </div> <div style="text-align: center;"> <p>(B)</p>  </div> <div style="text-align: center;"> <p>(C)</p>  </div> <div style="text-align: center;"> <p>Crimped Ferrule HEX. Crimp Size:</p>  <p>SW5.41 [.213" HEX.]</p> </div> <div style="text-align: center;"> <p>Crimped Contact Pin HEX. Crimp Size:</p>  <p>SW1.73 [.068" HEX.]</p> </div> </div>			
<b>Assembly Steps:</b>			
Picture	Process	Attention/Check	Tools Required
	Push ferrule "C" over the cable. Prepare the cable according to the diagram.	Do not damage center contact, dielectric and braid.	Blade Scissor
	Push contact "B" over inner conductor of cable up to cable dielectric and solder or crimp.	Contact "B" flush to dielectric.	Crimp tool: CT-L3 Crimp insert: CH-33F2A
	Splay out braid and insert cable in connector body "A".	Ensure that braid lies above crimp neck.	
	Slide ferrule "C" over braid until it to stop and crimp.	Crimp as close to connector body "A" as possible.	Crimp tool: CT-L3 Crimp insert: CH-33F2A