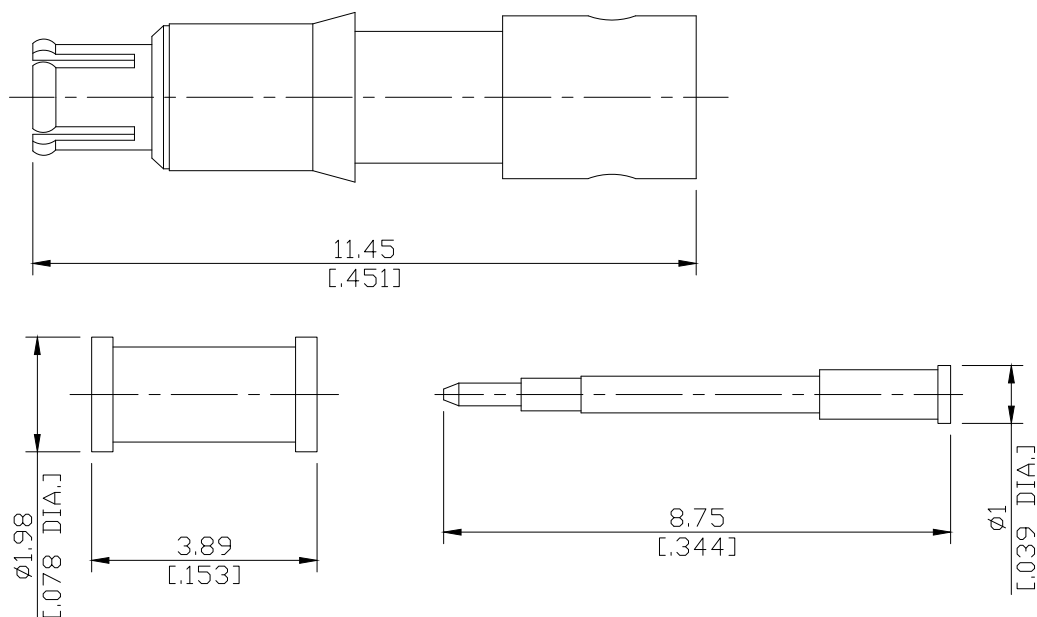


SSMCX Straight Cable Plug DC-6GHz

**SSMCX1E50-0085A / 13**



All dimensions are in mm [inch]

Tolerances according to DIN ISO 2768-mH

**Interface**

According to

IEC 61169-52

**Electrical Data**

Impedance	50 $\Omega$
Frequency	DC to 6 GHz
VSWR (Return Loss)	$\leq 1.5$ ( $\geq 14$ dB)
Insulation Resistance	$\geq 5$ G $\Omega$
Centre contact resistance	$\leq 6.0$ m $\Omega$
Outer contact resistance	$\leq 3.0$ m $\Omega$
Working Voltage (at sea level)	170 V rms

**Material And Plating**

Piece Parts	Material	Plating
Centre Contact	Brass	Gold plating, 3 $\mu$ inch (Non-magnetic nickel-phosphorus underplating, 80 $\mu$ inch)
Body	Brass	Nickel
Insulator	PEI	
Gasket	Silicone Rubber	

## SSMCX Straight Cable Plug DC-6GHz

# SSMCX1E50-0085A / 13

### Mechanical Data

Coupling mechanisms	Snap-lock
Centre conduct	Soldered
Cable entry	Soldered
Mating Cycles	≥ 500
Center Contact Captivation	≥ 10 N
Engagement force	≤ 6.7 N
Disengagement force	6 to 15 N

### Environmental Data

Temperature Range	-55°C to +155°C
RoHS	compliant

### Suitable Cables

RSF085, RSR085, RG405

### Packing

Single or 100