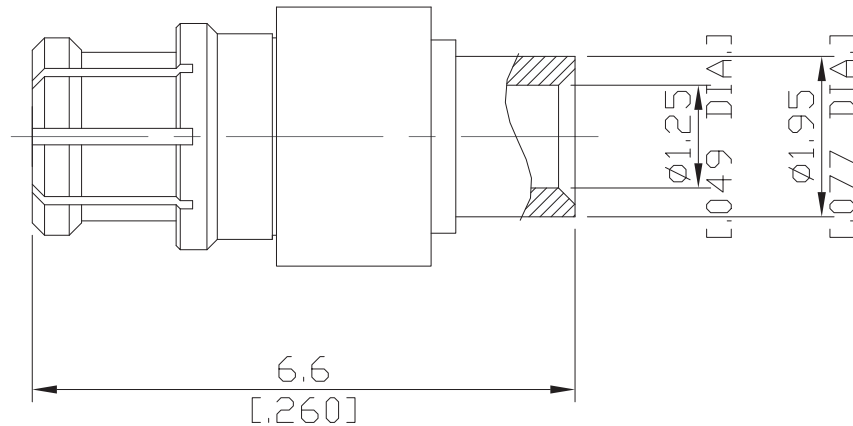


SMPS Jack (Female) Connector Solder / Contact Pin Plug-in Attachment for 0.047,
DC-40 GHz, VSWR 1.2

SMPS2E50-EZ047A / 99



All dimensions are in mm [inch]

Tolerances according to DIN ISO 2768-mH

Interface

According to N/A

Electrical Data

Impedance	50 Ω
Frequency	DC to 40 GHz
VSWR (Return Loss)	≤ 1.2 (≥ 20.83 dB)
Insertion Loss	≤ 0.12 × √F (GHz) dB
Insulation Resistance	≥ 3.5 GΩ
Center Contact Resistance	≤ 6.0 mΩ
Outer Contact Resistance	≤ 2.0 mΩ
Working Voltage (at sea level)	150 V rms

-VSWR in application depends decisive on cable assembly process-

Material And Plating

Piece Parts	Material	Plating
Centre contact	Beryllium Copper	Gold plating (Non-magnetic nickel-phosphorus underplating)
Body	Beryllium Copper	Gold plating (Non-magnetic nickel-phosphorus underplating)
Insulator	PTFE	

SMPS Jack (Female) Connector Solder / Contact Pin Plug-in Attachment for 0.047, DC-40 GHz, VSWR 1.2

SMPS2E50-EZ047A / 99

Mechanical Data

Coupling mechanisms	Snap-On	
Mating Cycles	Mating with Smooth Bore	≥ 500
	Mating with Full Detent	≥ 100
Center contact captivation		≥ 3.3 N
Engagement Force	Smooth Bore	5.3 N max.
	Full Detent	11.1 N max.
Disengagement force	Smooth Bore	4.4 N min.
	Full Detent	20.0 N min.
Cable entry	Soldered	
Centre Contact	Plug-in	

Environmental Data

Temperature Range	-65°C to +165°C
Thermal shock	MIL-STD-202, Meth. 107, Cond. B
Vibration	MIL-STD-202, Meth. 204, Cond. D
Shock	MIL-STD-202, Meth. 213, Cond. I
Moisture Resistance	MIL-STD-202, Meth. 106
RoHS	compliant

Suitable Cables

RSR047, RSF047, RSF047-FEP, RSF047-PVC, EF047

Packing

Single or 100