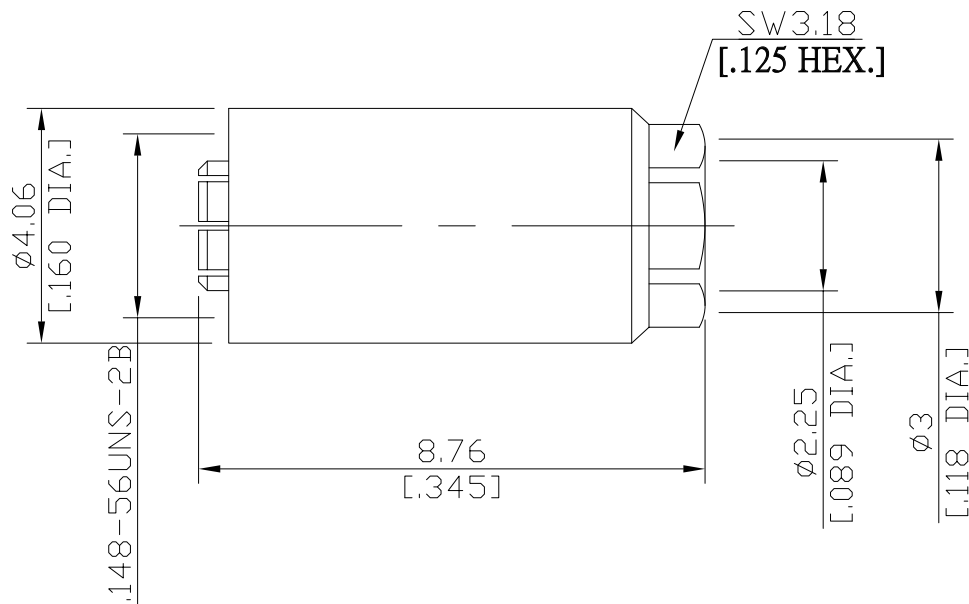


**SMPM-THR Female (Jack) Solder Connector  
For .085 Cable**

**SMPMTHR2E50-0085A/99X**



All dimensions are in mm [inch]

Tolerances according to DIN ISO 2768-mH

**Interface**

According to MIL-STD-348A/328

**Electrical Data**

Impedance 50 Ω  
Frequency DC to 20 GHz

- Limitations are possible due to the used cable type and manufacturing process -

**Mechanical Data**

Coupling mechanisms Snap-on or Screw-lock  
Centre contact Plug-in  
Cable entry Soldered

**Environmental Data**

Temperature range -55°C to +155°C  
RoHS compliant

**Material And Plating**

Connector parts	Material	Plating
Centre contact	Beryllium Copper	Gold plating(Nickel underplated)
Body	Beryllium Copper	Gold plating(Nickel underplated)
Insulator	PTFE	
Coupling nut	Stainless Steel	Passivated

**Suitable Cables**

.085 cable

**Packing**

Single or 100