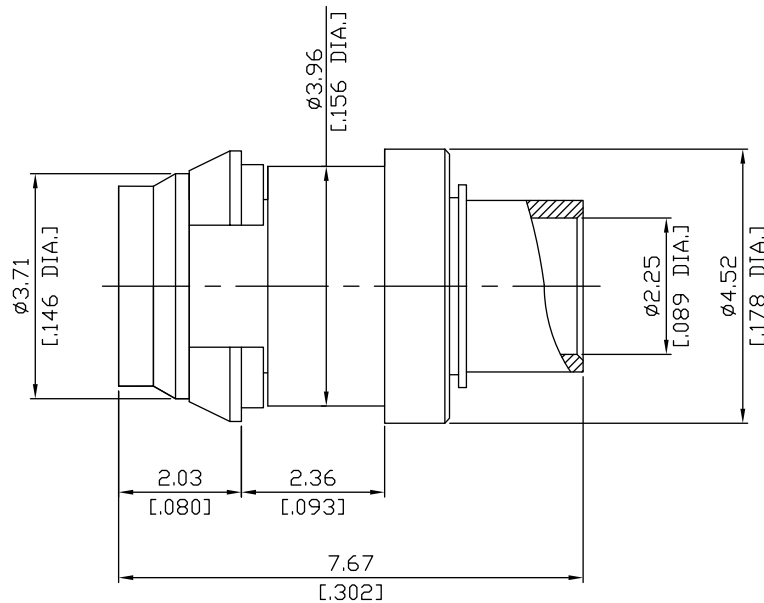


**SMPM MALE SNAP-ON FOR .093 Bulkhead  
FOR .085 S/R CABLE (Full Detent)**

**SMPM1EA50FD-0085A/99**



All dimensions are in mm [inch]

Tolerances according to DIN ISO 2768-mH

**Interface**

According to MIL-STD-348A/328-2

**Electrical Data**

Impedance: 50  $\Omega$   
 Frequency: DC to 40 GHz  
 VSWR (Return Loss):  $\leq 1.30$  ( $\geq 17.69$  dB)  
 Insertion Loss:  $\leq 0.1 \times \sqrt{F}$  (GHz) dB

- Limitations are possible due to the used cable type and manufacturing process -

**Mechanical Data**

Coupling mechanisms: Snap-on  
 Centre contact: Plug-in  
 Cable entry: Soldered

**Environmental Data**

Temperature range: -55°C to +155°C  
 RoHS: compliant

**Material And Plating**

Connector parts	Material	Plating
Centre contact	Beryllium Copper	Gold plating(Nickel underplated)
Body	Beryllium Copper	Gold plating(Nickel underplated)
Insulator	PTFE	

**Suitable Cables**

.085 cable

**Packing**

Single or 100