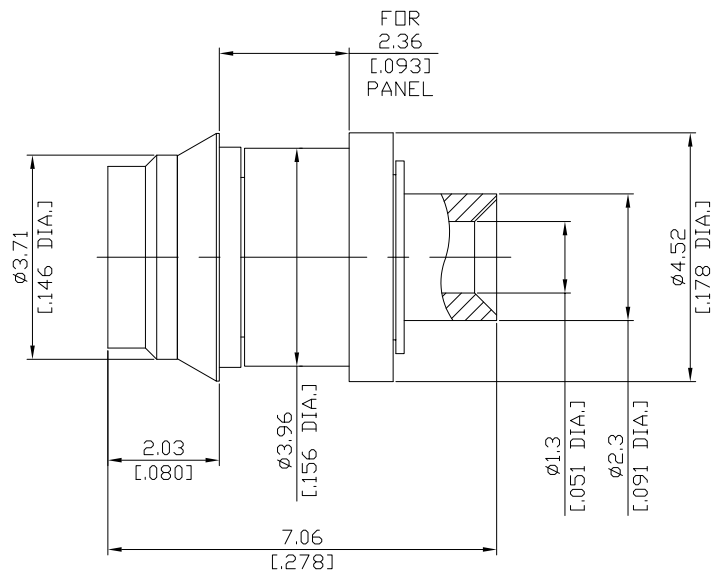




SMPM Smooth Bore Solder Plug Snap-In Bulkhead
for 2.36mm [.093"] Panel for .047 Semi-Rigid Cable

SMPM1E50SB-0047A/99



All dimensions are in mm [inch]

Tolerances according to DIN ISO 2768-mH

Interface

According to MIL-STD-348A/326

Electrical Data

Impedance 50 Ω
Frequency DC to 40 GHz
VSWR (Return loss) ≤ 1.35 (≥ 16.54 dB)

- Limitations are possible due to the used cable type and manufacturing process -

Mechanical Data

Coupling mechanisms Snap-on
Centre contact Soldered
Cable entry Soldered

Environmental Data

Temperature range -65°C to +155°C
RoHS compliant

Material And Plating

| Connector parts | Material | Plating |
|-----------------|------------------|----------------------------------|
| Centre contact | Beryllium Copper | Gold plating(Nickel underplated) |
| Body | Beryllium Copper | Gold plating(Nickel underplated) |
| Insulator | PTFE | |

Suitable Cables

RSR-047, RSF-047, RSF-047-FEP, UT 47, BELDEN 1674

Packing

Single or 100