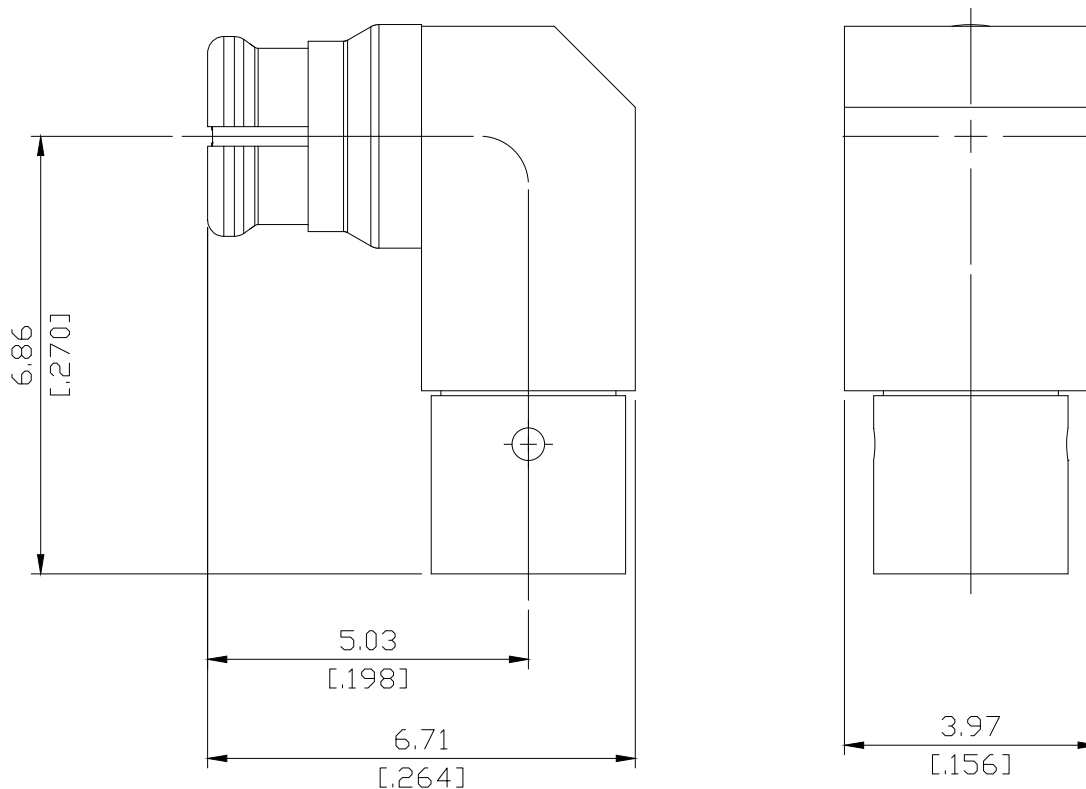


SMP Female Connector, Swept R/A for .085 Cable, DC-40 GHz

SMP2E59-0085B / 99



All dimensions are in mm [inch]

Tolerances according to DIN ISO 2768-mH

Interface

According to

MIL-STD-348B/326

Electrical Data

Impedance	50 Ω
Frequency	DC to 40 GHz
VSWR (Return Loss)	≤ 1.3 (≥ 17.7 dB)
Insertion Loss	$\leq 0.12 \times \sqrt{F}$ (GHz) dB
Insulation resistance	≥ 5 G Ω
Center contact resistance	≤ 6 m Ω
Outer contact resistance	≤ 2 m Ω
Test voltage	500 V rms
Working voltage	335 V rms

Material And Plating

Piece Parts	Material	Plating
Centre contact	Beryllium Copper	Gold plating, 3 pinch (Non-magnetic nickel-phosphorus underplating, 80 pinch)
Body	Beryllium Copper	Gold plating, 3 pinch (Non-magnetic nickel-phosphorus underplating, 80 pinch)
Insulator	PTFE	

The facts and figures herein are carefully compiled to the best of our knowledge, but they are intended for general informational purposes only. In the effort to improve our products, we reserve the right to make changes judged to be necessary.

Rev.:-	Rosnol RF/Microwave Technology Co., Ltd. www.rosnol.com ; info@rosnol.com
Date: JUL/16/2021	Phone: +886-3-463-5095 / Fax: +886-3-463-5952 N-CAGE Code: SFKK0 / ISO9001 Certified

Page

1/2

SMP Female Connector, Swept R/A for .085 Cable, DC-40 GHz

SMP2E59-0085B / 99

Mechanical Data

Coupling mechanisms	Snap-on	
Mating Cycles	Mating with Smooth Bore	≥ 1000
	Mating with Limited Detent	≥ 500
	Mating with Full Detent	≥ 100
Center contact captivation	≥ 7 N	
Engagement Force	Smooth Bore	9 N max.
	Limited Detent	45 N max.
	Full Detent	68 N max.
Disengagement force	Smooth Bore	2.2 N min.
	Limited Detent	9 N min.
	Full Detent	22 N min.

Environmental Data

Temperature Range	-65°C to +165°C
Thermal shock	MIL-STD-202, Meth. 107, Cond. B
Vibration	MIL-STD-202, Meth. 204, Cond. B
Shock	MIL-STD-202, Meth. 213, Cond. A
Moisture Resistance	MIL-STD-202, Method 106
RoHS	compliant

Packing

Single or 100