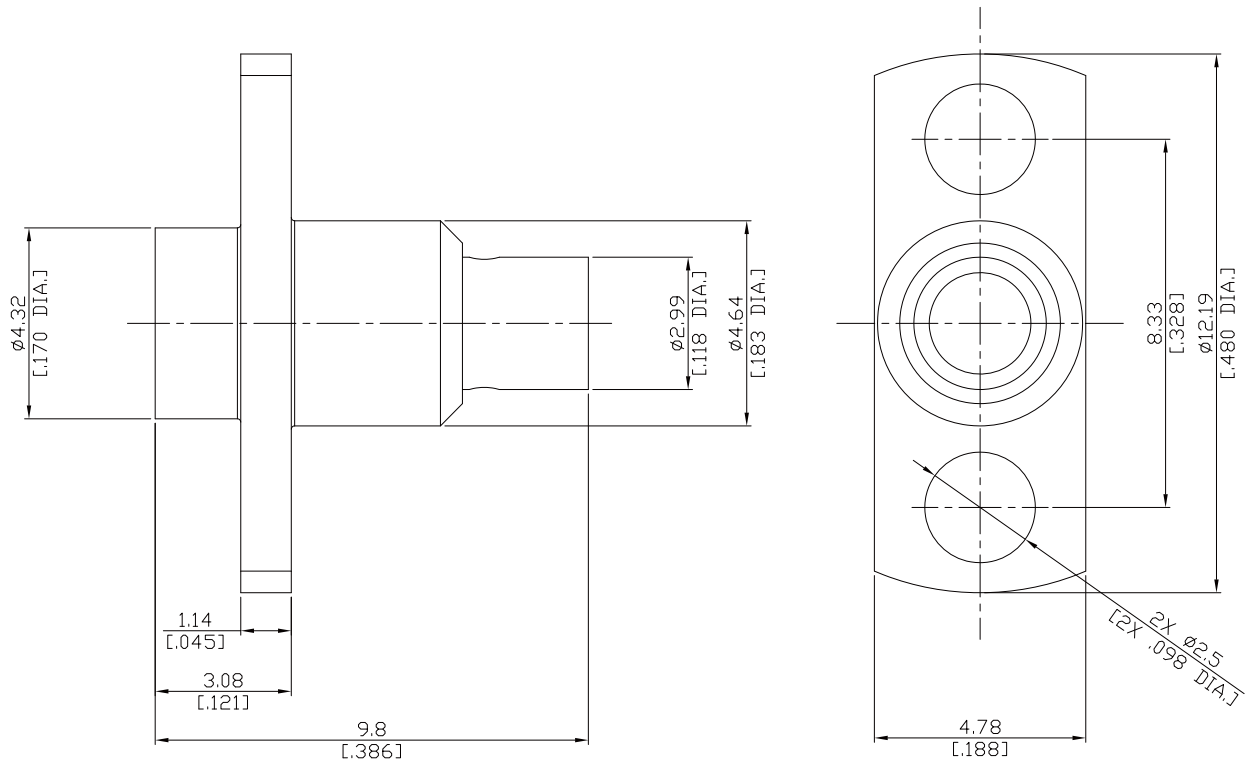


SMP Plug (male) Smooth Bore Connector Solder Attachment 2 Hole Flange Mount
For Ø.086 SEMI-RIGID CABL, 8.33mm (.328 inch) Hole Spacing DC-40 GHz VSWR1.35

SMP1EBT50-SB0085A / 9X



All dimensions are in mm [inch]

Tolerances according to DIN ISO 2768-mH

Interface

According to

MIL-STD-348A/326.4 (Smooth Bore)

Electrical Data

Impedance	50 Ω
Frequency	DC to 40GHz
VSWR (Return Loss)	≤ 1.35 (≥ 16.54 dB)
Insertion Loss	≤ 0.1 x √F (GHz) dB
Insulation resistance	≥ 5 GΩ
Center contact resistance	≤ 6.0 mΩ
Outer contact resistance	≤ 2.0 mΩ
Test voltage	500 V rms
Working voltage	335 V rms

Material And Plating

Piece Parts	Material	Plating
Centre contact	Beryllium Copper	Gold plating, 3 μinch (Non-magnetic nickel-phosphorus underplating, 80 μinch)
Body	Stainless Steel	Passivated
Insulator	PTFE	

SMP Plug (male) Smooth Bore Connector Solder Attachment 2 Hole Flange Mount
For Ø.086 SEMI-RIGID CABL, 8.33mm (.328 inch) Hole Spacing DC-40 GHz VSWR1.35

SMP1EBT50-SB0085A / 9X

Mechanical Data

Coupling mechanisms	Snap-lock	
Mating Cycles	≥ 1000	
Center contact captivation	≥ 7 N	
Engagement force	9 N max.	- smooth bore
Disengagement force	2.2 N min.	- smooth bore

Environmental Data

Temperature Range	-65°C to +165°C
Thermal shock	MIL-STD-202, Method 107, Condition B
Vibration	MIL-STD-202, Method 204, 28 g peak
Shock	MIL-STD-202, Method 213, 12000 g peak
Moisture Resistance	MIL-STD-202, Method 106
RoHS	compliant

Packing

Single or 100