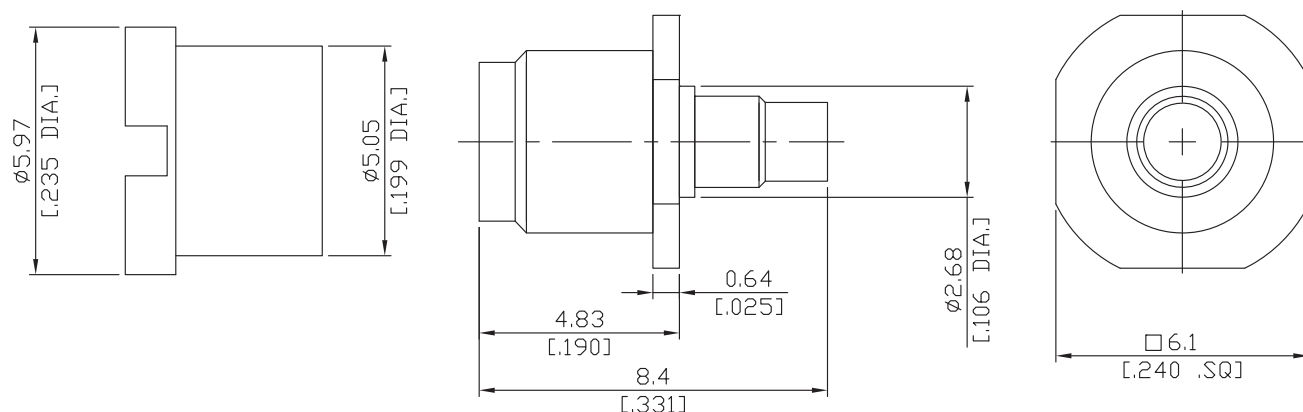


SMPM Plug (Male) Snap-On Connector Solder Attachment  
for RSR047, RSF047, DC-26.5 GHz VSWR 1.25, 26.5-40 GHz VSWR 1.40

**SMP1EA50FD-0047A / 99**



All dimensions are in mm [inch]

Tolerances according to DIN ISO 2768-mH

**Interface**

According to

MIL-STD-348A, /328-2

**Electrical Data**

Impedance	50 $\Omega$
Frequency	DC to 40 GHz
VSWR (Return Loss)	$\leq 1.25$ ( $\geq 19.08$ dB) DC to 26.5 GHz $\leq 1.40$ ( $\geq 15.56$ dB) 26.5 to 40 GHz
Insertion Loss	$\leq 0.1 \times \sqrt{F}$ (GHz) dB
Insulation Resistance	$\geq 5$ G $\Omega$
Center Contact Resistance	$\leq 6.0$ m $\Omega$
Outer Contact Resistance	$\leq 2.0$ m $\Omega$
Test Voltage (at sea level)	500 V rms
Working Voltage (at sea level)	335 V rms

- Limitations are possible due to the used cable type -

**Material And Plating**

Piece Parts	Material	Plating
Centre contact	Beryllium Copper	Gold plating, 3 $\mu$ inch (Non-magnetic nickel-phosphorus underplating, 80 $\mu$ inch)
Body	Beryllium Copper	Gold plating, 3 $\mu$ inch (Non-magnetic nickel-phosphorus underplating, 80 $\mu$ inch)
Insulator	PTFE	

**SMPM Plug (Male) Snap-On Connector Solder Attachment**  
for RSR047, RSF047, DC-26.5 GHz VSWR 1.25, 26.5-40 GHz VSWR 1.40

## SMP1EA50FD-0047A / 99

### Mechanical Data

Coupling mechanisms	Snap-on	
Mating Cycles	Mating with Smooth Bore	≥ 1000
	Mating with Limited Detent	≥ 500
	Mating with Full Detent	≥ 100
Center contact captivation	≥ 7 N	
Engagement Force	Smooth Bore	9 N max.
	Limited Detent	45 N max.
	Full Detent	68 N max.
Disengagement force	Smooth Bore	2.2 N min.
	Limited Detent	9 N min.
	Full Detent	22 N min.

### Environmental Data

Temperature Range	-65°C to +155°C
Thermal shock	MIL-STD-202, Meth. 107, Cond. B
Vibration	MIL-STD-202, Meth. 204, Cond. D
Shock	MIL-STD-202, Meth. 213, Cond. I
Moisture Resistance	MIL-STD-202, Meth. 106
RoHS	compliant

### Suitable Cables

RSR047, RSF047

### Packing

Single or 100