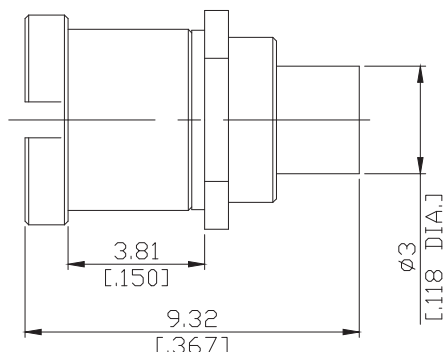
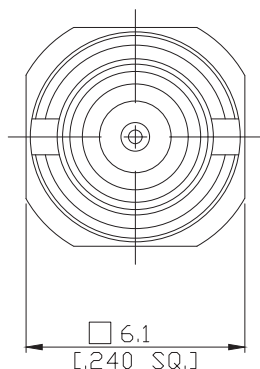
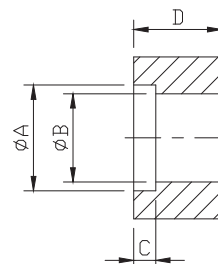


SMP Full Detent Plug (male) Connector Solder Attachment  
Bulkhead Mount for .085, .086, RG405 Cable DC-40 GHz, VSWR 1.5

**SMP1EA50-FD0085A / 99**



Mounting Dimension



	mm		inch	
	Max.	Min.	Max.	Min.
A	6.13	6.07	.241	.239
B	5.10	5.08	.201	.200
C	1.30	1.24	.051	.049
D	5.13	5.03	.202	.198

All dimensions are in mm [inch]

Tolerances according to DIN ISO 2768-mH

### Interface

According to

MIL-STD-348A,/328-2

### Electrical Data

Impedance

50  $\Omega$

Frequency

DC to 40 GHz

VSWR (Return Loss)

$\leq 1.5 (\geq 14 \text{ dB})$

Insertion Loss

$\leq 0.1 \times \sqrt{F}$  (GHz) dB

Insulation Resistance

$\geq 5 \text{ G}\Omega$

Center Contact Resistance

$\leq 6.0 \text{ m}\Omega$

Outer Contact Resistance

$\leq 2.0 \text{ m}\Omega$

Test Voltage (at sea level)

500 V rms

Working Voltage (at sea level)

335 V rms

- Limitations are possible due to the used cable type -

### Material And Plating

Piece Parts	Material	Plating
Centre contact	Beryllium Copper	Gold plating, 3 $\mu$ inch (Non-magnetic nickel-phosphorus underplating, 80 $\mu$ inch)
Body	Beryllium Copper	Gold plating, 3 $\mu$ inch (Non-magnetic nickel-phosphorus underplating, 80 $\mu$ inch)
Insulator	PTFE	
Central Nut	Beryllium Copper	Gold plating, 3 $\mu$ inch (Non-magnetic nickel-phosphorus underplating, 80 $\mu$ inch)

The facts and figures herein are carefully compiled to the best of our knowledge, but they are intended for general informational purposes only. In the effort to improve our products, we reserve the right to make changes judged to be necessary.

Rev.:  
Date: 12/7/2020

Rosnol RF/Microwave Technology Co., Ltd.  
[www.rosnol.com](http://www.rosnol.com); [info@rosnol.com](mailto:info@rosnol.com)  
Phone: +886-3-463-5095 / Fax: +886-3-463-5952  
N-CAGE Code: SFKK0 / ISO9001 Certified

Page  
1/2

SMP Full Detent Plug (male) Connector Solder Attachment  
Bulkhead Mount for .085, .086, RG405 Cable DC-40 GHz, VSWR 1.5

# SMP1EA50-FD0085A / 99

## Mechanical Data

Coupling mechanisms	Snap-on	
Mating Cycles	Mating with Smooth Bore	≥ 1000
	Mating with Limited Detent	≥ 500
	Mating with Full Detent	≥ 100
Center contact captivation	≥ 7 N	
Engagement Force	Smooth Bore	9 N max.
	Limited Detent	45 N max.
	Full Detent	68 N max.
Disengagement force	Smooth Bore	2.2 N min.
	Limited Detent	9 N min.
	Full Detent	22 N min.

## Environmental Data

Temperature Range	-65°C to +155°C
Corrosion	MIL-STD-202, Meth. 101, Cond. B
Thermal shock	MIL-STD-202, Meth. 107, Cond. B
Vibration	MIL-STD-202, Meth. 204, Cond. D
Shock	MIL-STD-202, Meth. 213, Cond. I
Moisture Resistance	MIL-STD-202, Meth. 106
RoHS	compliant

## Suitable Cables

.085, .086, RG405

## Packing

Single or 100