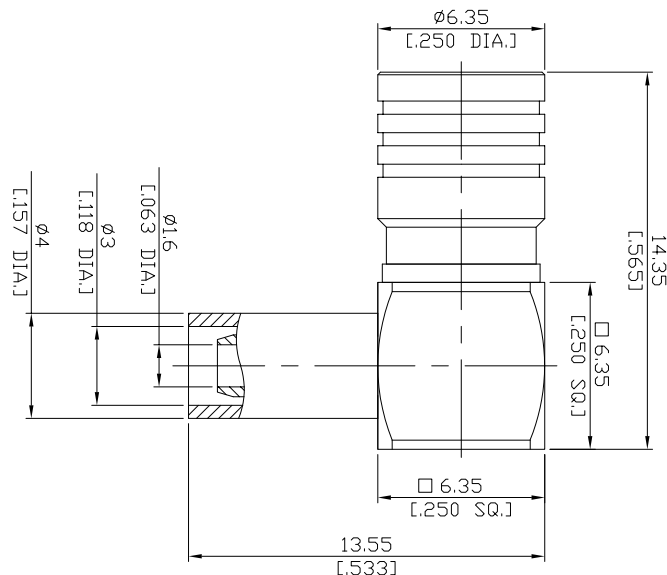


**SMB (Male) Right Angle Cable Plug,
DC-4 GHz, VSWR ≤1.22**

SMB1C59-G316A/H11



All dimensions are in mm [inch]

Tolerances according to DIN ISO 2768-mH

Interface

According to IEC 60169-10; MIL-STD-348A/311

Electrical Data

Impedance 50 Ω
Frequency DC to 4 GHz
VSWR (Return Loss) ≤ 1.22 (≥ 20dB)
Insertion Loss ≤ 0.05 dB

- Limitations are possible due to the used cable type and manufacturing process -

Mechanical Data

Coupling mechanisms Snap-lock
Centre contact Soldered
Cable entry Crimped

Environmental Data

Temperature range -65°C to +165°C
RoHS compliant

Material And Plating

Connector parts	Material	Plating
Centre contact	Phosphor Bronze	Gold plating (Nickel underplated)
Body	Brass	Gold plating (Nickel underplated)
Insulator	PTFE	
Coupling nut	Brass	Gold plating (Nickel underplated)
Crimp ferrules	Brass	Gold plating (Nickel underplated)

Suitable Cables

RG 316/U, RG 174 A/U, RG 188, LMR 100A, RNL-100

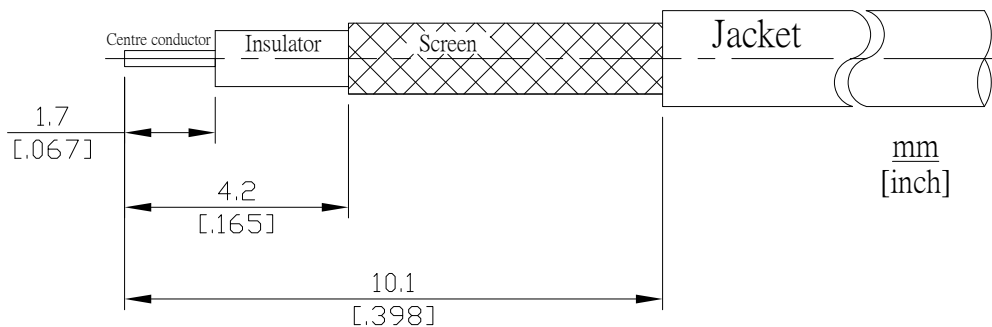
Packing

Single or 100

SMB (Male) Right Angle Cable Plug,
DC-4 GHz, VSWR ≤ 1.22

SMB1C59-G316A/H11

Recommended Cable Stripping Dimensions



Crimp Dimensions [HEX]

Crimp ferrule 3.25mm [.128 inch]