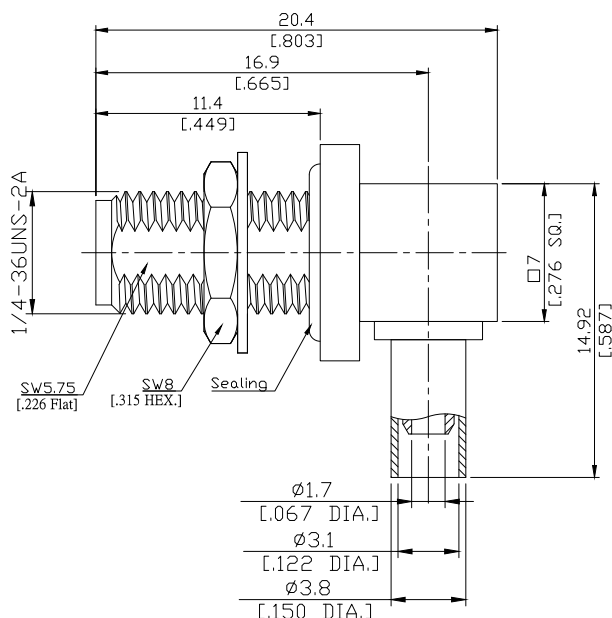
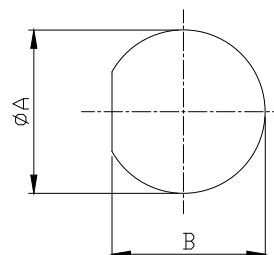


SMA (Female) R/P Rightangle Bulkhead Cable Crimp Jack
DC-12.4 GHz VSWR 1.30

SMA7CA59-G316A / H1



Mounting Dimensions



	mm		inch	
	Max.	Min.	Max.	Min.
A	6.3	6.25	.249	.246
B	6.1	6	.240	.236

All dimensions are in mm [inch]

Tolerances according to DIN ISO 2768-mH

Interface

According to

IEC 60169-15; MIL-STD-348B/310

Electrical Data

Impedance	50 Ω
Frequency	DC to 12.4 GHz
VSWR (Return Loss)	≤ 1.3 (≥ 17.7 dB)
Insertion Loss	≤ 0.05 x √F (GHz) dB
Insulation Resistance	≥ 5 GΩ
Center Contact Resistance	≤ 3 mΩ
Outer Contact Resistance	≤ 2 mΩ
Test Voltage (at sea level)	1000 V rms
Working Voltage (at sea level)	480 V rms

- Limitations are possible due to the used cable type and manufacturing method -

Material And Plating

Piece Parts	Material	Plating
Centre contact	Phosphor Bronze	Gold plating, 3 μinch (Non-magnetic nickel-phosphorus underplating, 80 μinch)
Body	Brass	Gold plating, 3 μinch (Non-magnetic nickel-phosphorus underplating, 80 μinch)
Insulator	PTFE	
Gasket	Silicone rubber	
Crimp ferrules	Brass	Gold plating, 3 μinch (Non-magnetic nickel-phosphorus underplating, 80 μinch)
Fastening nut	Brass	Gold plating, 3 μinch (Non-magnetic nickel-phosphorus underplating, 80 μinch)
Washer	Brass	Gold plating, 3 μinch (Non-magnetic nickel-phosphorus underplating, 80 μinch)
O-Ring	Silicone rubber	

The facts and figures herein are carefully compiled to the best of our knowledge, but they are intended for general informational purposes only. In the effort to improve our products, we reserve the right to make changes judged to be necessary.

Rev.:
Date: 12/7/2020

Rosnol RF/Microwave Technology Co., Ltd.
www.rosnol.com; info@rosnol.com
Phone: +886-3-463-5095 / Fax: +886-3-463-5952
N-CAGE Code: SFKK0 / ISO9001 Certified

Page

1/2

SMA (Female) R/P Rightangle Bulkhead Cable Crimp Jack
DC-6 GHz VSWR 1.25

SMA7CA59-G316A / H1

Mechanical Data

Coupling mechanisms	Screw-lock
Mating Cycles	≥ 500
Centre contact	Soldered
Cable entry	Crimped
Center Contact Captivation: axial	≥ 27 N
Weight	N/A
Coupling Test Torque	1.7 Nm max.
Recommended Torque	0.56 Nm

Environmental Data

Temperature Range	-65°C to +165°C
Thermal shock	MIL-STD-202, Meth. 107, Cond. B
Corrosion	MIL-STD-202, Meth. 101, Cond. B
Vibration	MIL-STD-202, Meth. 204, Cond. D
Shock	MIL-STD-202, Meth. 213, Cond. I
Moisture Resistance	MIL-STD-202, Meth. 106
IP Rating	IP6x- Dust tight - no partical ingress IPx7- Waterproof for 30 minutes up to 1 meter underwater. IPx8- Waterproof for 48 hours at 1 meter underwater.
RoHS	compliant

Suitable Cables

RG 316/U, RG 174 A/U, RG 188, G 02232, BELDEN 7805

Related Documents

MD19

Packing

Single or 100