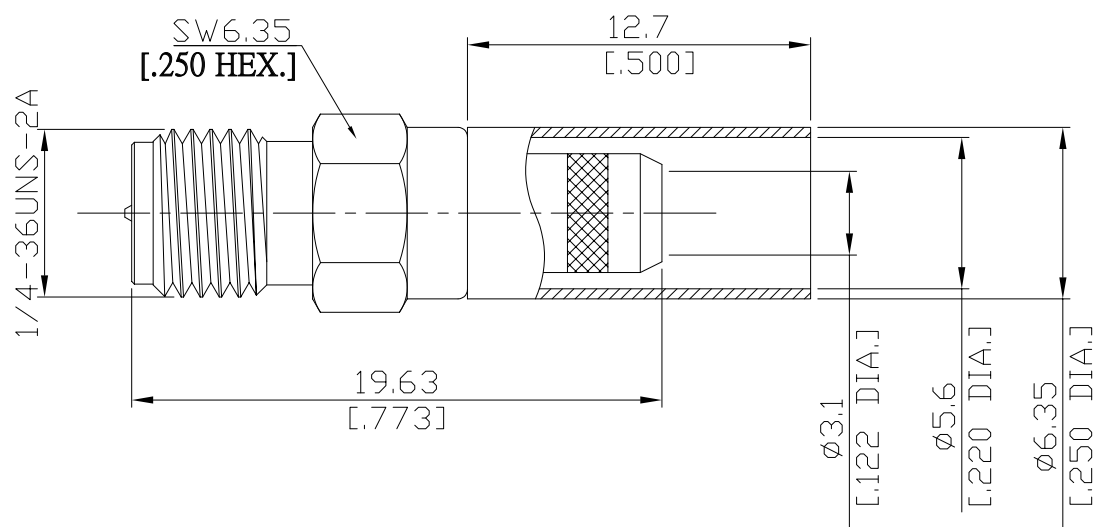




**SMA (Reverse Polarity Female)  
Straight Cable RP Jack**

**SMA7C50-G142B/14**



All dimensions are in mm [inch]

Tolerances according to DIN ISO 2768-mH

**Interface**

Derived from IEC 60169-15; MIL-STD-348A/310

**Electrical Data**

Impedance 50 Ω

Frequency DC to 6 GHz

- Limitations are possible due to the used cable type and manufacturing process -

**Mechanical Data**

Coupling mechanisms Screw-lock  
Centre contact Soldered or Crimped  
Cable entry Crimped

**Environmental Data**

Temperature range -65°C to +165°C  
RoHS compliant

**Material And Plating**

Connector parts	Material	Plating
Centre contact	Brass	Gold plating(Nickel underplated)
Body	Brass	Copper-Tin-Zinc Alloy
Insulator	PTFE	
Crimp ferrules	Brass	Copper-Tin-Zinc Alloy

**Suitable Cables**

RG-55, RG-142, RG-223, RG-400

**Packing**

Single, 5-pack, or 100

**SMA (Reverse Polarity Female)  
Straight Cable RP Jack**

**SMA7C50-G142B/14**

**Crimp Dimensions [HEX]**

Crimp ferrule	5.41mm [.213 inch]
Centre contact	1.73mm [.068 inch]