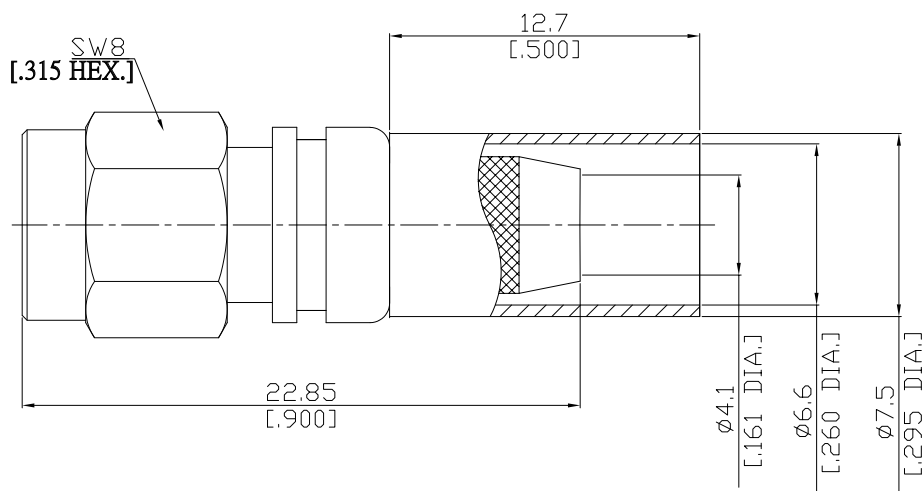


**SMA Reverse Polarity
Straight Cable Plug**

SMA5C50-R240A/H44



All dimensions are in mm [inch]

Tolerances according to DIN ISO 2768-mH

Interface

Derived from IEC 60169-15; MIL-C-39012; MIL-STD-348A/310

Electrical Data

Impedance 50 Ω

Frequency DC to 6 GHz

- Limitations are possible due to the used cable type and manufacturing process -

Mechanical Data

Coupling mechanisms Screw-lock
Centre contact Soldered or Crimped
Cable entry Crimped

Environmental Data

Temperature range -65°C to +165°C
RoHS compliant

Material And Plating

Connector parts	Material	Plating
Centre contact	Phosphor Bronze	Gold plating(Nickel underplated)
Body	Brass	Copper-Tin-Zinc Alloy
Insulator	PTFE	
Gasket	Silicone Rubber	
Coupling nut	Brass	Copper-Tin-Zinc Alloy
Crimp ferrules	Brass	Gold plating(Nickel underplated)

Suitable Cables

LMR 240, BELDEN H155, RNL-240

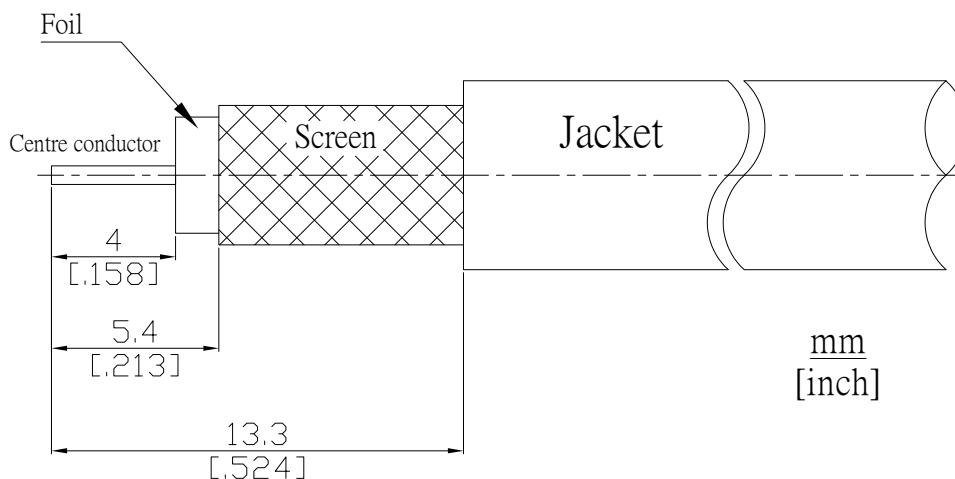
Packing

Single or 100

**SMA Reverse Polarity
Straight Cable Plug**

SMA5C50-R240A/H44

Recommended Cable Stripping Dimensions



Crimp Dimensions [HEX]

Crimp ferrule	6.48mm [.255 inch]
Centre contact	2.54mm [.100 inch]