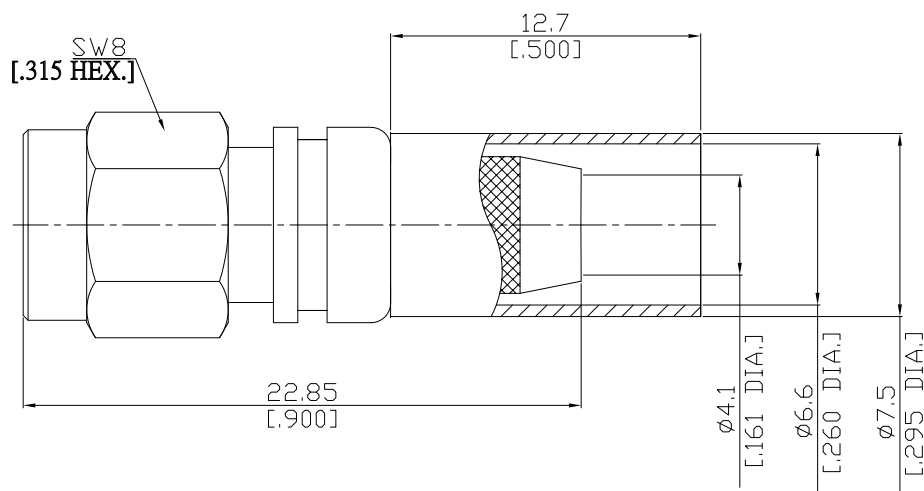


**SMA Reverse Polarity  
Straight Cable Plug**

**SMA5C50-EZR240A/H44**



All dimensions are in mm [inch]

Tolerances according to DIN ISO 2768-mH

**Interface**

Derived from IEC 60169-15; MIL-C-39012; MIL-STD-348A/310

**Electrical Data**

Impedance 50  $\Omega$   
Frequency DC to 8 GHz  
VSWR (Return Loss)  $\leq 1.30$  ( $\geq 17.69$  dB)

- Limitations are possible due to the used cable type and manufacturing process -

**Mechanical Data**

Coupling mechanisms Screw-lock  
Centre contact Plug-in  
Cable entry Crimped

**Environmental Data**

Temperature range -65°C to +165°C  
RoHS compliant

**Material And Plating**

Connector parts	Material	Plating
Centre contact	Phosphor Bronze	Gold plating(Nickel underplated)
Body	Brass	Copper-Tin-Zinc Alloy
Insulator	PTFE	
Gasket	Silicone Rubber	
Coupling nut	Brass	Copper-Tin-Zinc Alloy
Crimp ferrules	Brass	Gold plating(Nickel underplated)

**Suitable Cables**

LMR 240, BELDEN H155, RNL-240

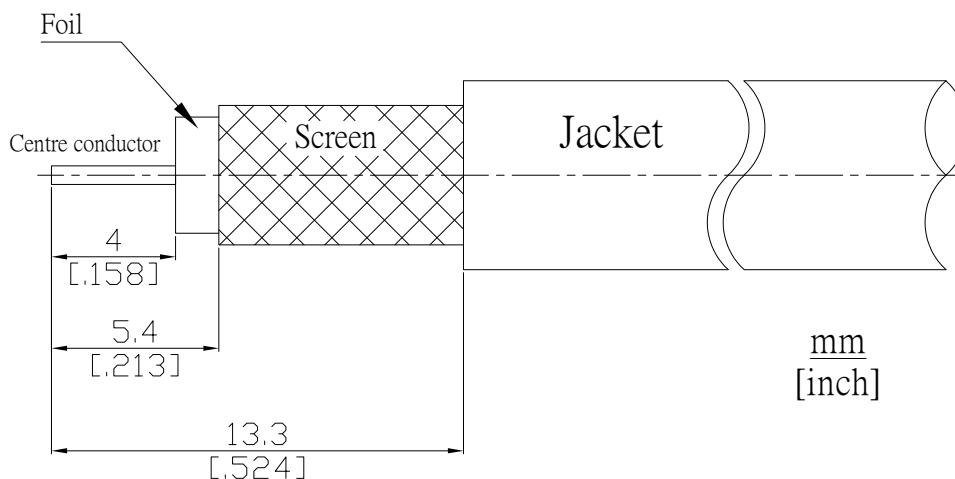
**Packing**

Single or 100

**SMA Reverse Polarity  
Straight Cable Plug**

**SMA5C50-EZR240A/H44**

**Recommended Cable Stripping Dimensions**



**Crimp Dimensions [HEX]**

Crimp ferrule 6.48mm [.255 inch]