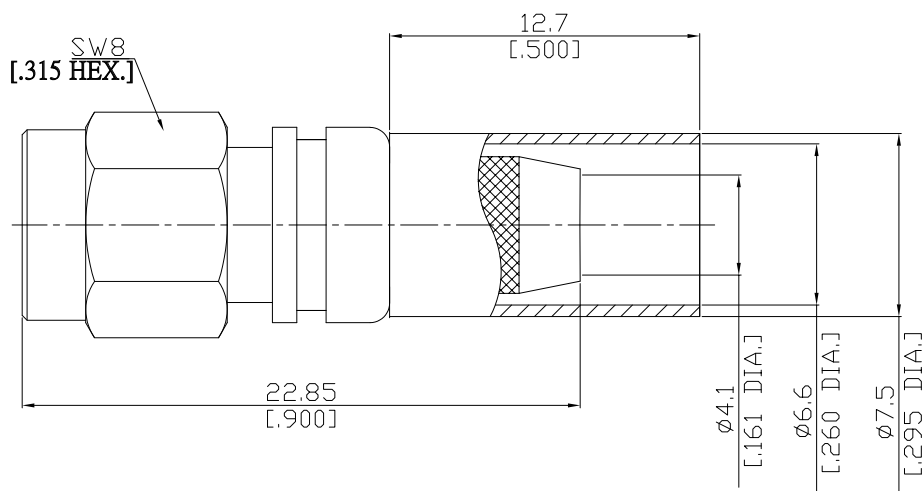


**SMA Reverse Polarity
Straight Cable Plug**

SMA5C50-EZR240A/911



All dimensions are in mm [inch]
Tolerances according to DIN ISO 2768-mH

Interface

Derived from IEC 60169-15; MIL-C-39012; MIL-STD-348A/310

Electrical Data

Impedance 50 Ω
Frequency DC to 8 GHz
VSWR (Return Loss) ≤ 1.30 (≥ 17.69 dB)

- Limitations are possible due to the used cable type and manufacturing process -

Mechanical Data

Coupling mechanisms Screw-lock
Centre contact Plug-in
Cable entry Crimped

Environmental Data

Temperature range -65°C to +165°C
RoHS compliant

Material And Plating

Connector parts	Material	Plating
Centre contact	Beryllium Copper	Gold plating(Nickel underplated)
Body	Brass	Gold plating(Nickel underplated)
Insulator	PTFE	
Gasket	Silicone Rubber	
Coupling nut	Brass	Gold plating(Nickel underplated)
Crimp ferrules	Brass	Gold plating(Nickel underplated)

Suitable Cables

LMR 240, BELDEN H155, RNL-240

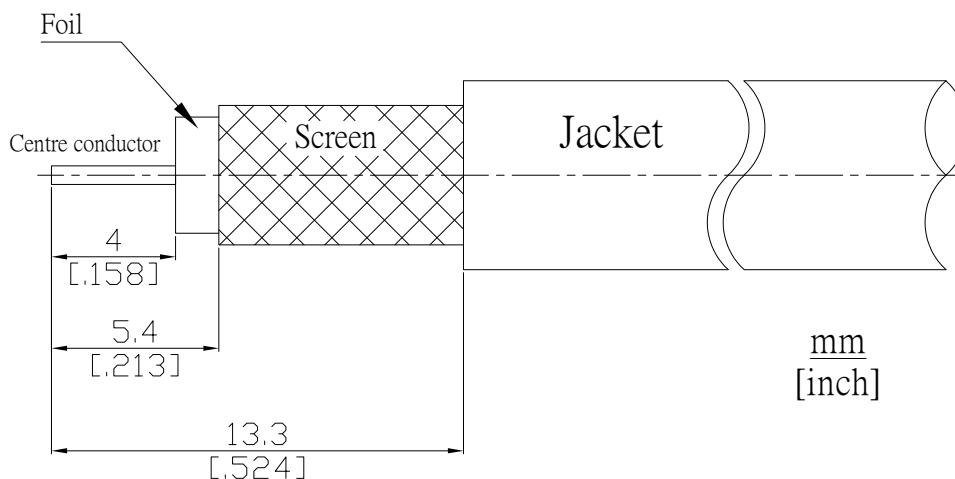
Packing

Single or 100

**SMA Reverse Polarity
Straight Cable Plug**

SMA5C50-EZR240A/911

Recommended Cable Stripping Dimensions



Crimp Dimensions [HEX]

Crimp ferrule 6.48mm [.255 inch]