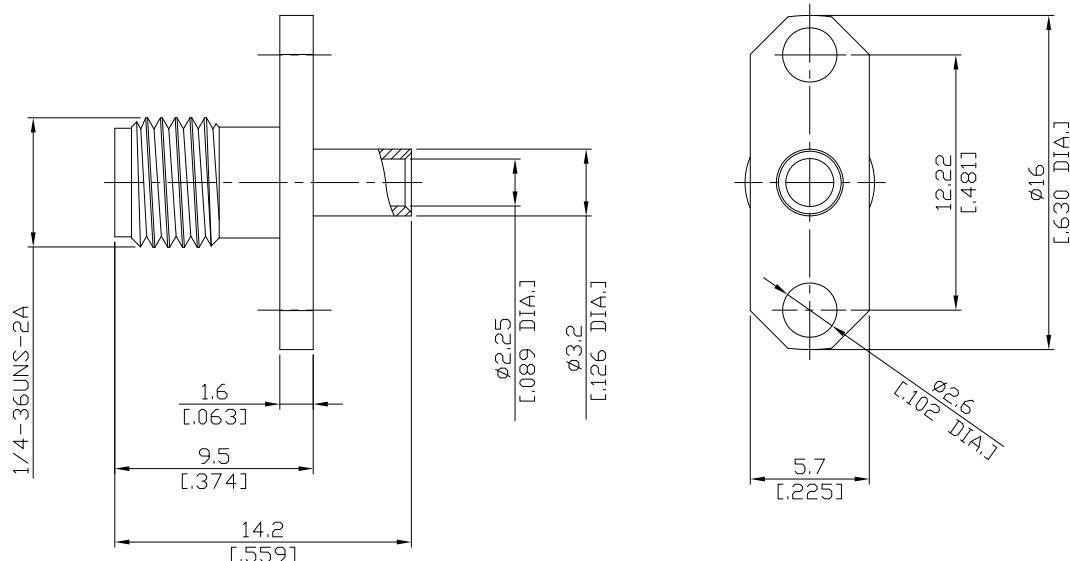


SMA Straight Panel Cable Jack

SMA2EBT50-0085A/9Q



All dimensions are in mm [inch]

Tolerances according to DIN ISO 2768-mH

**Interface**

According to

IEC 60169-15; MIL-C-39012; MIL-STD-348A/310

**Electrical Data**

Impedance

50 Ω

Frequency

DC to 18 GHz

VSWR (Return Loss)

≤ 1.25 (≥ 19.08 dB)

Insertion Loss

≤ 0.04 × √F [GHz] dB

- Limitations are possible due to the used cable type and manufacturing process -

**Mechanical Data**

Coupling mechanisms

Screw-lock

Centre contact

Soldered

Cable entry

Soldered

**Environmental Data**

Temperature range

-65°C to +165°C

RoHS

compliant

**Material And Plating**

Connector parts	Material	Plating
Centre contact	Beryllium Copper	Gold plating(Nickel underplated)
Body	Stainless Steel	Gold plating(Nickel underplated)
Insulator	PTFE	

**Suitable Cables**

RSR-085, RSF-085, RSF-0485-FEP, UT 85, RG 405/U, RTK- FS 085, RTK- Flex 405, BELDEN 1671A

**Packing**

Single or 100

**Related Document**

Mounting Dimension

MD13