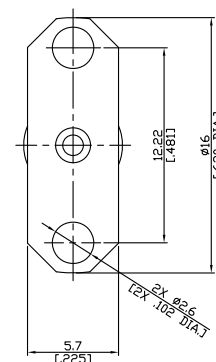
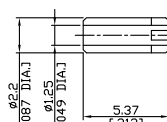
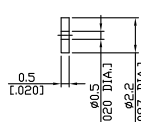
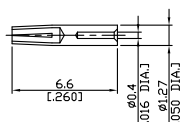
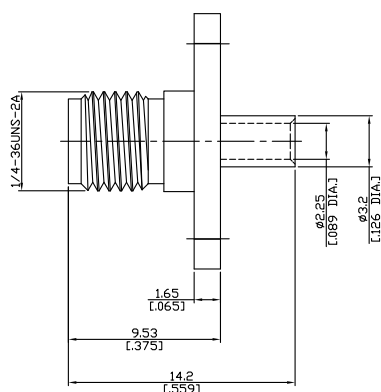


SMA Jack (Female) Connector Solder Attachment 2 Hole Flange Mount  
12.22mm [.481"] Hole Spacing for .047 Cable

**SMA2EBT50-0047B / 91**

3  
[.118]  
RECOMMDED  
CABLE STRIPPING DIM'S



All dimensions are in mm [inch]

Tolerances according to DIN ISO 2768-mH

**Interface**

According to

IEC 61169-15

MIL-STD-348B/310

**Electrical Data**

Impedance

50 Ω

Frequency

DC to 18 GHz

**Material And Plating**

Piece Parts	Material	Plating
Centre contact	Beryllium Copper	Gold plating, 3 pinch (Non-magnetic nickel-phosphorus underplating, 80 pinch)
Body	Brass	Gold plating, 3 pinch (Non-magnetic nickel-phosphorus underplating, 80 pinch)
Insulator	PTFE	

## SMA Jack (Female) Connector Solder Attachment 2 Hole Flange Mount 12.22mm [.481"] Hole Spacing for .047 Cable

### SMA2EBT50-0047B / 91

#### Mechanical Data

Coupling Mechanisms	Screw-Lock
Mating Cycles	≥ 500
Coupling Nut Retention	≥ 270 N
Center contact captivation: axial	≥ 20 N
Coupling Test Torque	≤ 1.7 Nm
Recommended Torque	0.9 Nm
Centre Contact	Soldered
Cable Entry	Crimped

#### Environmental Data

Temperature Range	-65°C to +165°C
Thermal Shock	MIL-STD-202, Method 107, Condition B
Corrosion	MIL-STD-202, Method 101, Condition B
Vibration	MIL-STD-202, Method 204, Condition D
Shock	MIL-STD-202, Method 213, Condition I
Moisture Resistance	MIL-STD-202, Method 106
RoHS	compliant

#### Suitable Cables

.047 Cable

#### Weight

N/A

#### Packing

Single or 100