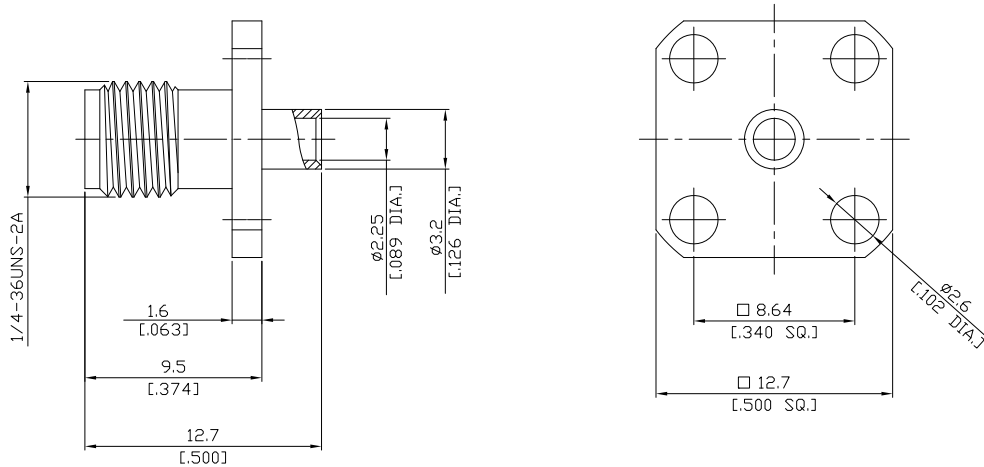


## SMA Straight Panel Cable Jack

## SMA2EBF50-0085A/9Q



All dimensions are in mm [inch]

Tolerances according to DIN ISO 2768-mH

### Interface

According to MIL-C-39012;MIL-STD-348A/310

### Electrical Data

Impedance 50  $\Omega$   
 Frequency DC to 18 GHz  
 VSWR (Return Loss)  $\leq 1.25$  ( $\geq 19$  dB)  
 Insertion Loss  $\leq 0.04 \times \sqrt{F}$  (GHz) dB

- Limitations are possible due to the used cable type -

### Mechanical Data

Coupling mechanisms Screw-lock  
 Centre contact Soldered  
 Cable entry Soldered

### Environmental Data

Temperature range -65°C to +165°C  
 RoHS compliant

### Material And Plating

| Connector parts | Material         | Plating                          |
|-----------------|------------------|----------------------------------|
| Centre contact  | Beryllium Copper | Gold plating(Nickel underplated) |
| Body            | Stainless Steel  | Gold plating(Nickel underplated) |
| Insulator       | PTFE             |                                  |

### Suitable Cables

RSR-085, RSF-085, RSF-0485-FEP, UT 85, RG 405/U, RTK- FS 085, RTK- Flex 405, BELDEN 1671A

### Packing

Single or 100

### Related Document

Mounting Dimension MD10