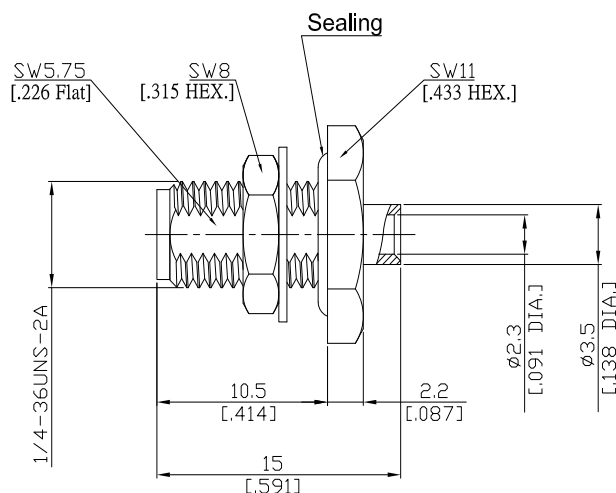


SMA Straight Bulkhead Cable Jack

SMA2EA50-0085A/9X



All dimensions are in mm [inch]

Tolerances according to DIN ISO 2768-mH

Interface

According to

IEC 60169-15; MIL-C-39012; MIL-STD-348A/310

Electrical Data

Impedance

50 Ω

Frequency

DC to 18 GHz

VSWR (Return Loss)

≤ 1.25 (≥ 19 dB)

Insertion Loss

≤ 0.04 × √F [GHz] dB

- Limitations are possible due to the used cable type and manufacturing process -

Mechanical Data

Coupling mechanisms

Screw-lock

Centre contact

Soldered

Cable entry

Soldered

Environmental Data

Temperature range

-65°C to +165°C

RoHS

compliant

Material And Plating

Connector parts	Material	Plating
Centre contact	Beryllium Copper	Gold plating(Nickel underplated)
Body	Stainless Steel	Passivated
Insulator	PTFE	
Gasket	Silicone Rubber	
Fastening nut	Stainless Steel	Passivated
Washer	Brass	Copper-Tin-Zinc Alloy

Suitable Cables

RSR-085, RSF-085, RSF-085-FEP, EF405, UT 85, RG 405/U, RTK- FS 085, RTK- Flex 405, BELDEN 1671A, 0.085 flexible cable types

Packing

Single or 100

Related Document

Mounting Dimension

MD19