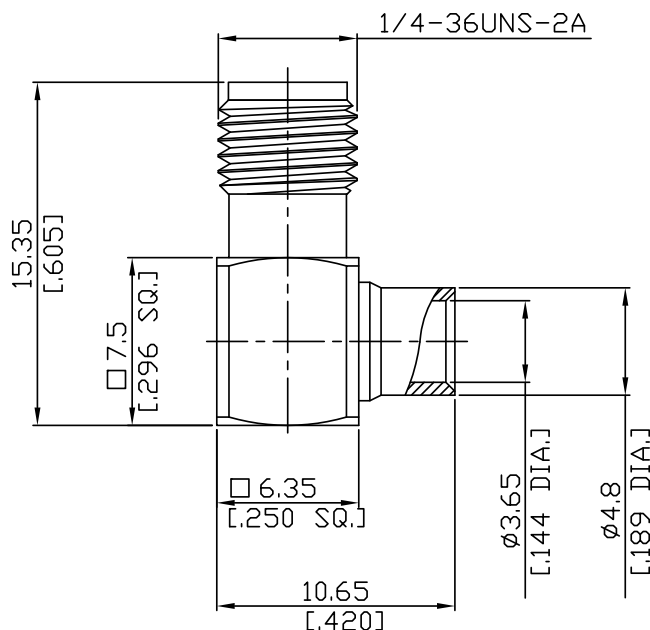


SMA Right Angle Cable Jack

SMA2E59-0141A/91



All dimensions are in mm [inch]

Tolerances according to DIN ISO 2768- mH

Interface

According to

IEC 60169-15; MIL-C-39012; MIL-STD-348A/310

Electrical Data

Impedance

50 Ω

Frequency

DC to 12.4 GHz

VSWR

$\leq 1.05 + 0.01 \times f$ [GHz]

Insertion Loss

$\leq 0.04 \times \sqrt{f}$ [GHz] dB

- Digressions are possible due to the used cable type and manufacturing process -

Mechanical Data

Coupling mechanisms

Screw-lock

Centre contact

Soldered

Cable entry

Soldered

Environmental Data

Temperature range

-65°C to +165°C

RoHS

compliant

Material And Plating

Connector parts	Material	Plating
Centre contact	Beryllium Copper	Gold plating(Nickel underplated)
Body	Brass	Gold plating(Nickel underplated)
Insulator	PTFE	

Suitable Cables

RSR-141, RSF-141, RSF-141-FEP, EF402, UT 141, RG 402/U, RTK- FS 141, RTK- Flex 402, BELDEN 1673A

Packing

Single or 100