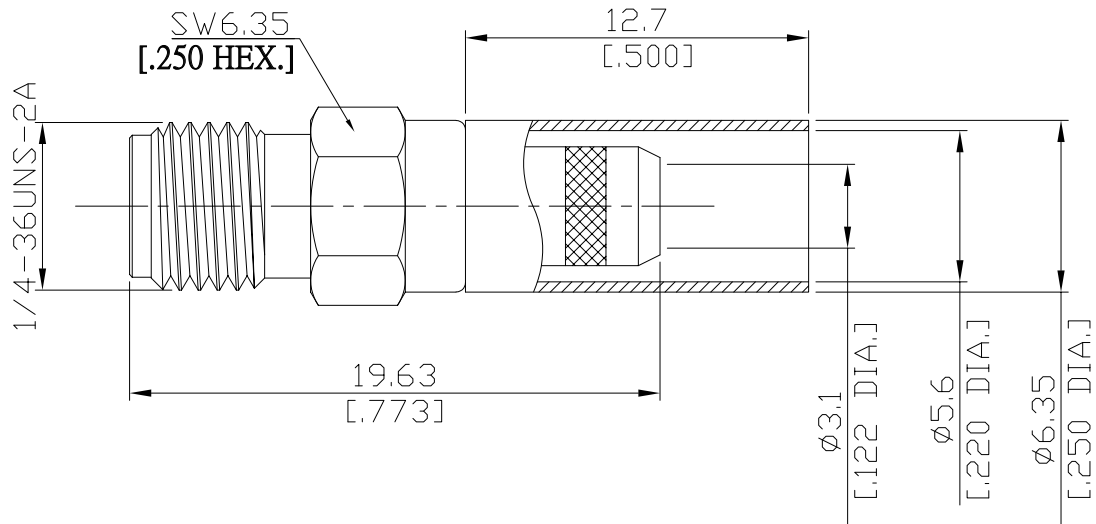


**SMA (Female) Straight Cable Jack,  
DC-6 GHz**

**SMA2C50-G142A/93**



All dimensions are in mm [inch]

Tolerances according to DIN ISO 2768-mH

**Interface**

According to IEC 60169-15; MIL-STD-348A/310

**Electrical Data**

Impedance 50 Ω

Frequency DC to 6 GHz

- Limitations are possible due to the used cable type and manufacturing process -

**Mechanical Data**

Coupling mechanisms Screw-lock  
Centre contact Soldered or Crimped  
Cable entry Crimped

**Environmental Data**

Temperature range -65°C to +165°C  
RoHS compliant

**Material And Plating**

Connector parts	Material	Plating
Centre contact	Beryllium Copper	Gold plating(Nickel underplated)
Body	Brass	Nickel
Insulator	PTFE	
Crimp ferrules	Brass	Nickel

**Suitable Cables**

RG-55, RG-142, RG-223, RG-400

**Packing**

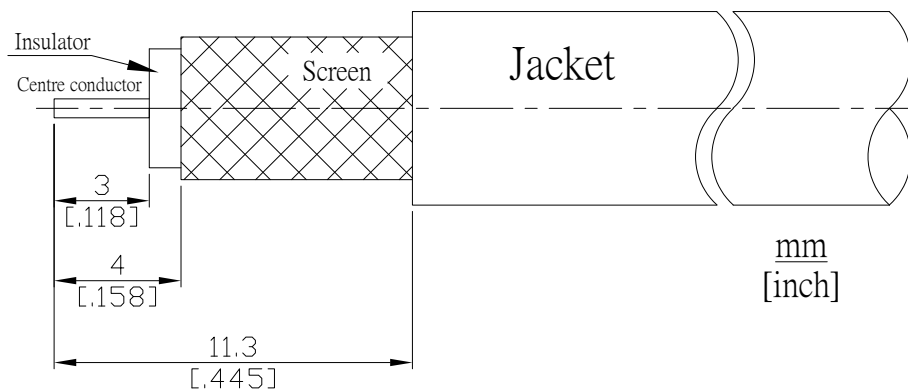
Single, 5-pack, or 100



SMA (Female) Straight Cable Jack,  
DC-6 GHz

SMA2C50-G142A/93

Recommended Cable Stripping Dimensions



Crimp Dimensions [HEX]

Crimp ferrule	5.41 mm [.213 inch]
Centre contact	1.73 mm [.068 inch]