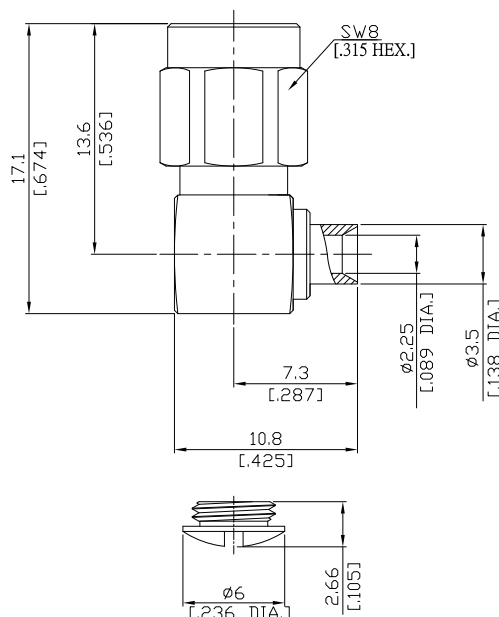


## SMA Right Angle Cable Plug

## SMA1E59-EF405A/91X



All dimensions are in mm [inch]

Tolerances according to DIN ISO 2768- mH

### Interface

According to MIL-C-39012; MIL-STD-348A/310

### Electrical Data

Impedance 50 Ω  
 Frequency DC to 12.4 GHz  
 VSWR  $\leq 1.05 + 0.01 \times f \text{ [GHz]}$   
 Insertion Loss  $\leq 0.04 \times \sqrt{f \text{ [GHz]}}$  dB

- Limitations are possible due to the used cable type -

### Mechanical Data

Coupling mechanisms Screw-lock  
 Centre contact Soldered  
 Cable entry Soldered

### Environmental Data

Temperature range -65°C to +165°C  
 RoHS compliant

### Material And Plating

Connector parts	Material	Plating
Centre contact	Beryllium Copper	Gold plating(Nickel underplated)
Body	Brass	Gold plating(Nickel underplated)
Insulator	PTFE	
Gasket	Silicone Rubber	
Coupling nut	Stainless Steel	Passivated

### Suitable Cables

EF405, RSR-085, RSF-085, RSF-085-FEP, UT 85, RG 405/U, RTK- FS 085, RTK- Flex 405, BELDEN 1671A

### Packing

Single or 100