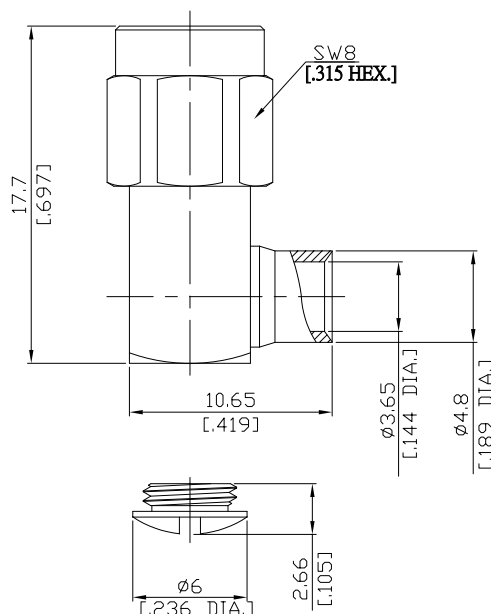


SMA Right Angle Cable Plug

SMA1E59-0141B/9XX



All dimensions are in mm [inch]

Tolerances according to DIN ISO 2768- mH

**Interface**

According to

IEC 60169-15; MIL-C-39012; MIL-STD-348A/310; CECC 22110

**Electrical Data**

Impedance

50 Ω

Frequency

DC to 11 GHz

VSWR (Return loss)

≤ 1.25 (≥ 19.08 dB)

- Digressions are possible due to the used cable type and manufacturing method -

**Mechanical Data**

Coupling mechanisms

Screw-lock

Centre contact

Soldered

Cable entry

Soldered

**Environmental Data**

Temperature range

-65°C to +165°C

RoHS

compliant

**Material And Plating**

Connector parts	Material	Plating
Centre contact	Beryllium Copper	Gold plating(Nickel underplated)
Body	Stainless Steel	Passivated
Insulator	PTFE	
Gasket	Silicone Rubber	
Coupling nut	Stainless Steel	Passivated

**Suitable Cables**

RSR-141, RSF-141, RSF-141-FEP, EF402, UT 141, RG 402/U, RTK- FS 141, RTK- Flex 402, BELDEN 1673A

**Packing**

Single or 100