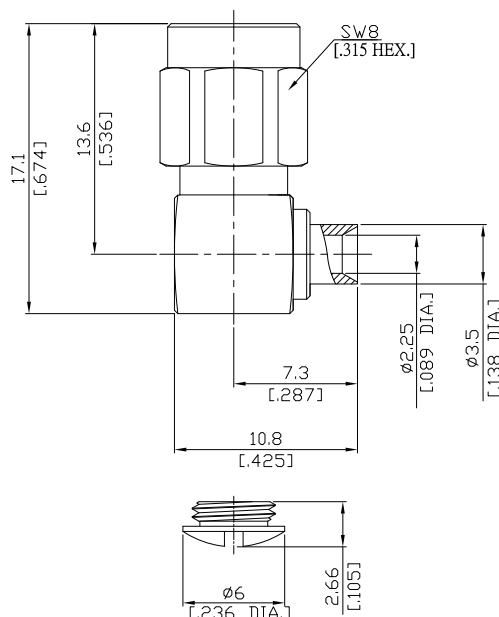


SMA Right Angle Cable Plug

SMA1E59-0085A/911



All dimensions are in mm [inch]

Tolerances according to DIN ISO 2768- mH

Interface

According to MIL-C-39012; MIL-STD-348A/310

Electrical Data

Impedance 50 Ω
Frequency DC to 12.4 GHz
VSWR $\leq 1.05 + 0.01 \times f \text{ [GHz]}$
Insertion Loss $\leq 0.04 \times \sqrt{f \text{ [GHz]}}$ dB

- Limitations are possible due to the used cable type -

Mechanical Data

Coupling mechanisms Screw-lock
Centre contact Soldered
Cable entry Soldered

Environmental Data

Temperature range -65°C to +165°C
RoHS compliant

Material And Plating

Connector parts	Material	Plating
Centre contact	Beryllium Copper	Gold plating(Nickel underplated)
Body	Brass	Gold plating(Nickel underplated)
Insulator	PTFE	
Gasket	Silicone Rubber	
Coupling nut	Brass	Gold plating(Nickel underplated)

Suitable Cables

RSR-085, RSF-085, RSF-085C, RSF-085-FEP, UT 85, RG 405/U, RTK- FS 085, RTK- Flex 405, BELDEN 1671A

Packing

Single or 100