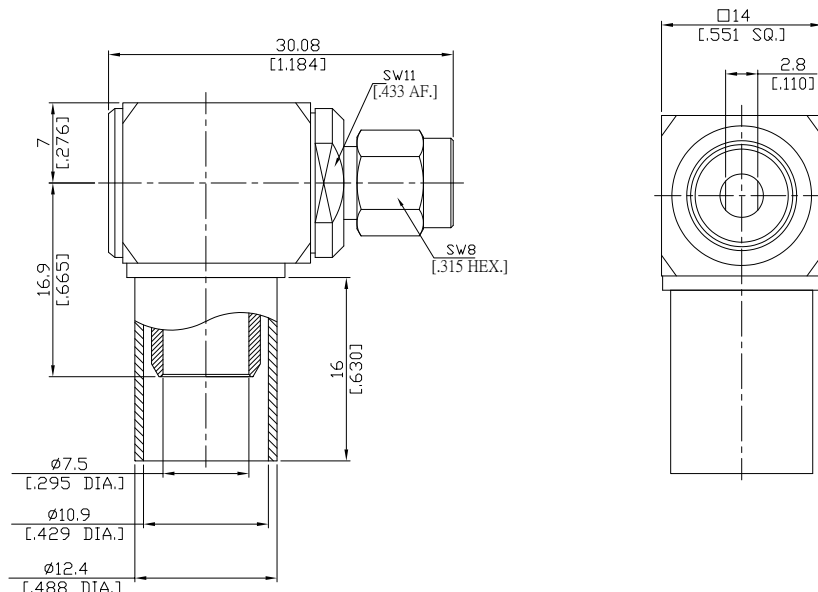




SMA Right-Angle Cable Plug

SMA1C59-R400A/144



All dimensions are in mm [inch]

Tolerances according to DIN ISO 2768-mH

Interface

According to IEC 60169-15; MIL-C-39012; MIL-STD-348A/310; CECC 22110

Electrical Data

Impedance 50 Ω
 Frequency DC 6 GHz
 VSWR (Return Loss) DC-2 GHz: ≤ 1.13 (≥ 24 dB) 2-4 GHz: ≤ 1.22 (≥ 20 dB) 4-6 GHz: ≤ 1.43 (≥ 15 dB)
 Insertion Loss ≤ 0.1 x √F [GHz] dB

- Digressions are possible due to the used cable type and manufacturing process -

Mechanical Data

Coupling mechanisms Screw-lock
 Centre contact Soldered
 Cable entry Crimp

Environmental Data

Temperature range -65°C to +165°C
 RoHS compliant

Material And Plating

Connector parts	Material	Plating
Centre contact	Brass	Gold plating(Nickel underplated)
Body	Brass	Copper-Tin-Zinc Alloy
Insulator	PTFE	
Gasket	Silicone Rubber	
Coupling nut	Brass	Copper-Tin-Zinc Alloy
Crimp ferrules	Brass	Copper-Tin-Zinc Alloy

Suitable Cables

LMR 400; Spuma 400; Spuma 400 FR-01; Belden 7810A, 8214, 9913

Packing

Single or 100