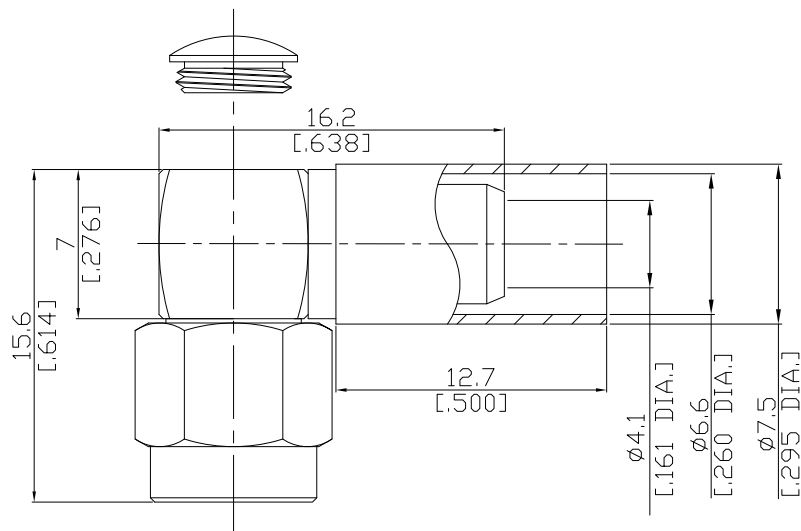




SMA(Male) Right Angle Plug

SMA1C59-R240A/944



All dimensions are in mm [inch]

Tolerances according to DIN ISO 2768-mH

Interface

According to IEC 60169-15; MIL-STD-348A/310

Electrical Data

Impedance 50 Ω

Frequency DC to 6 GHz

VSWR (Return Loss) ≤ 1.20 (≥ 20.8 dB)

- Limitations are possible due to the used cable type and manufacturing process -

Mechanical Data

Coupling mechanisms Screw-lock

Centre contact Soldered

Cable entry Crimped

Environmental Data

Temperature range -65°C to +165°C

RoHS compliant

Material And Plating

Connector parts	Material	Plating
Centre contact	Beryllium Copper	Gold plating(Nickel underplated)
Body	Brass	Copper-Tin-Zinc Alloy
Insulator	PTFE	
Gasket	Silicone Rubber	
Coupling nut	Brass	Copper-Tin-Zinc Alloy
Crimp ferrules	Brass	Copper-Tin-Zinc Alloy

Suitable Cables

LMR 240, RNL-240

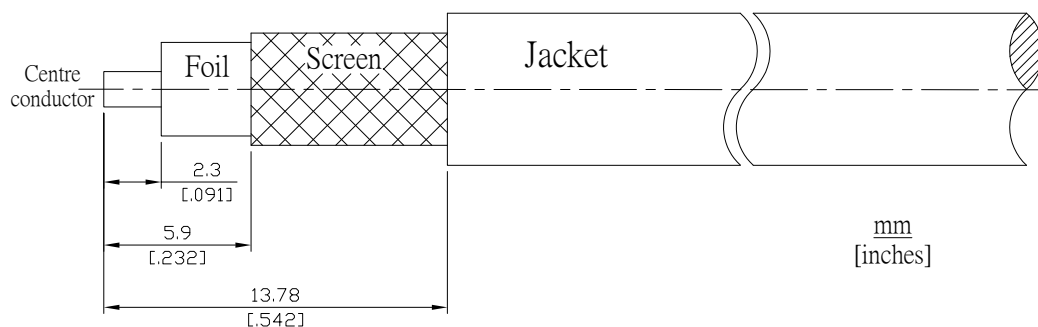
Packing

Single or 100

SMA(Male) Right Angle Plug

SMA1C59-R240A/944

Recommended Cable Stripping Dimensions



Crimp Dimensions [HEX]

Crimp ferrule

6.48mm [.255 inch]