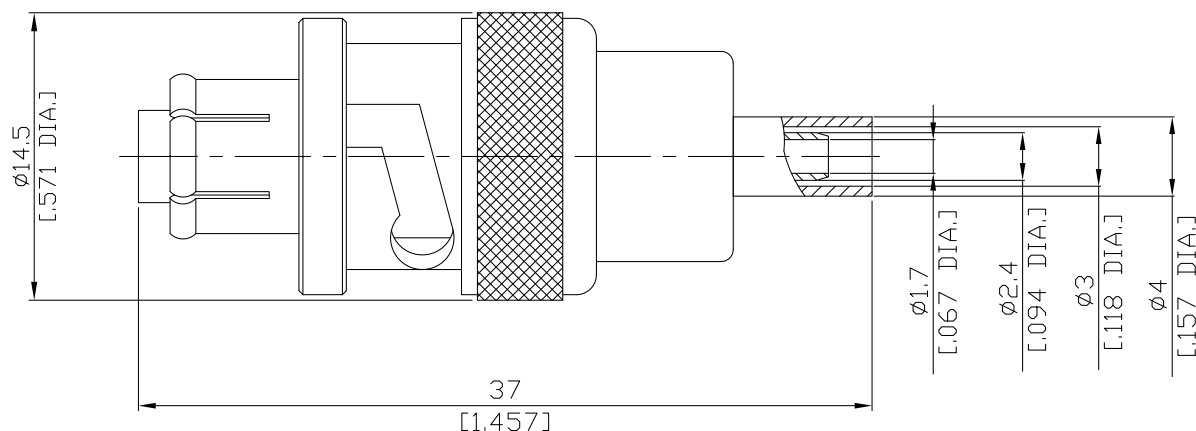


# SHV Straight Cable Plug

SHV1C50-G316A/133



All dimensions are in mm [inch]

Tolerances according to DIN ISO 2768-mH

## Interface

According to MIL-STD-348A/314

## Electrical Data

Impedance 50  $\Omega$   
Frequency DC to 500 MHz  
VSWR (Return Loss)  $\leq 1.25$  ( $\geq 19.08$  dB)  
Insertion Loss  $\leq 0.04 \times \sqrt{F}$  (GHz) dB

- Limitations are possible due to the used cable type -

## Mechanical Data

Coupling mechanisms Bayonet-lock  
Centre contact Crimped  
Cable entry Crimped

## Environmental Data

Temperature range -65°C to +165°C  
RoHS compliant

## Material And Plating

Connector parts	Material	Plating
Centre contact	Brass	Gold plating(Nickel underplated)
Body	Brass	Nickel
Insulator	PTFE	
Gasket	Silicone Rubber	
Coupling nut	Brass	Nickel
Crimp ferrules	Brass	Nickel

## Suitable Cables

RG 316/U, RG 174 A/U, RG 188, G 02232, BELDEN 7805

## Packing

Single or 100