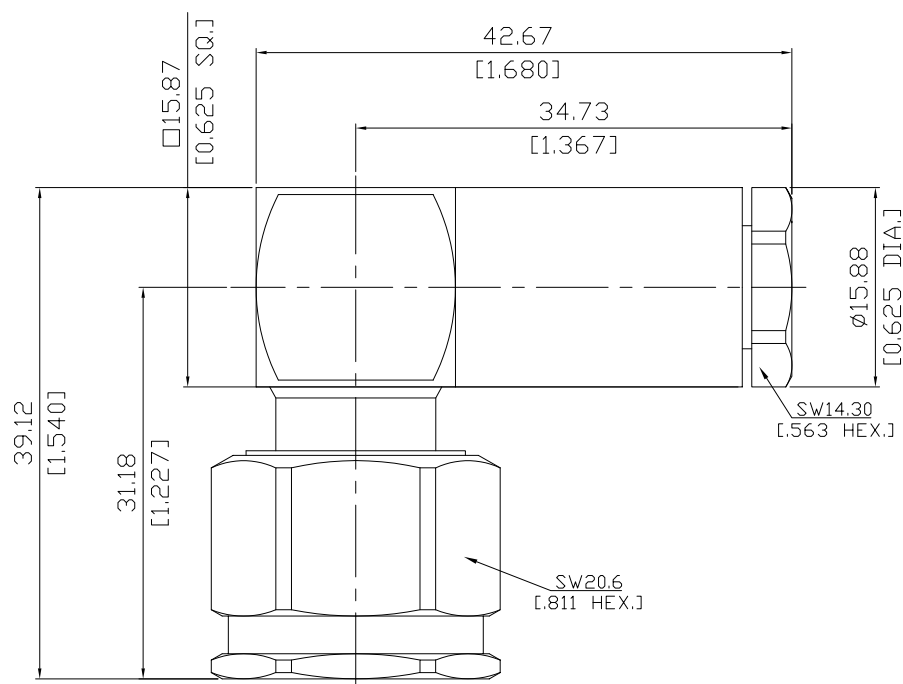


SC Right Angle Cable Plug

SC1K59-0250A/9XX



All dimensions are in mm [inch]

Tolerances according to DIN ISO 2768-mH

**Interface**

According to MIL-C-39012; MIL-STD-348A/309

**Electrical Data**

Impedance 50 Ω  
 Frequency DC to 10 GHz  
 VSWR (Return loss) ≤ 1.30 (≥ 17.69 dB)  
 Insertion loss ≤ 0.08 x √F [GHz] dB

- Limitations are possible due to the used cable type and manufacturing process -

**Mechanical Data**

Coupling mechanisms Screw-lock  
 Centre contact Soldered  
 Cable entry Solder clamp  
 Mating cycles ≥ 500

**Environmental Data**

Temperature range -65°C to +165°C  
 RoHS compliant

Temperature cycling MIL-STD-202, Meth. 107, Cond. C (-65°C to +165°C)  
 Shock MIL-STD-202, Meth. 213, Cond. I (100 Gs)  
 Vibration MIL-STD-202, Meth. 204, Cond. D (20 Gs)  
 Moisture resistance MIL-STD-202, Meth. 106 (omission of step 7b)  
 Corrosion MIL-STD-202, Meth. 101, Cond. B (48 hours)  
 Barometric pressure (altitude) MIL-STD-202, Meth. 105, Cond. C (70000 ft; 625 VRMS)

SC Right Angle Cable Plug

SC1K59-0250A/9XX

**Material And Plating**

Connector parts	Material	Plating
Centre contact	Beryllium Copper	Gold plating(Nickel underplated)
Body	Stainless Steel	Passivated
Insulator	PTFE	
Gasket	Silicone Rubber	
Coupling nut	Stainless Steel	Passivated

**Suitable Cables**

Semi-Rigid .250

**Packing**

Single or 100