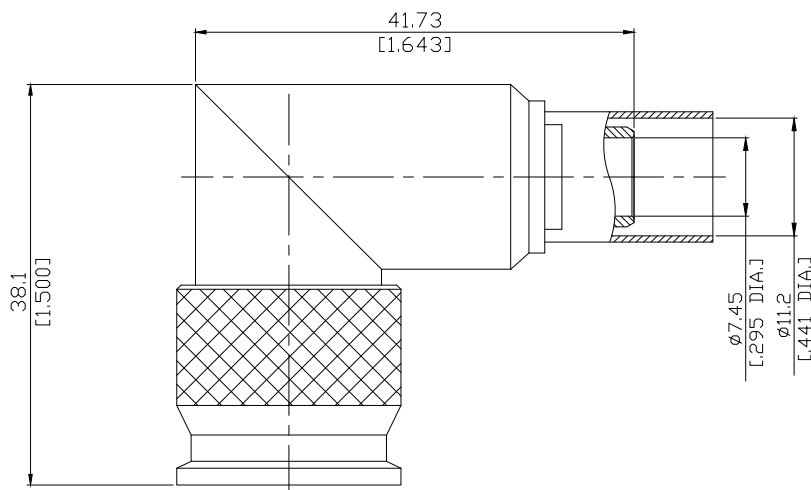


SC Plug Male Rightangle Connector Crimp/Solder Attachment
for RG214, RG9, RG225, RG393

SC1C59-G214A / 100



All dimensions are in mm [inch]

Tolerances according to DIN ISO 2768-mH

Interface

According to

MIL-STD-348A/309

Electrical Data

Impedance

50 Ω

Frequency

DC to 11 GHz

Insulation Resistance

≥ 5 G Ω

Center Contact Resistance

≤ 1.0 m Ω

Outer Contact Resistance

≤ 0.15 m Ω

Voltage rating

1000 V rms

Dielectric Withstanding Voltage

3000 V rms Max

Material And Plating

Piece Parts	Material	Plating
Centre contact	Brass	Gold plating, 3 μ inch (Non-magnetic nickel-phosphorus underplating, 80 μ inch)
Body	Brass	Silver
Insulator	PTFE	
Coupling nut	Brass	Silver

SC Plug Male Rightangle Connector Crimp/Solder Attachment
for RG214, RG9, RG225, RG393

SC1C59-G214A / 100

Mechanical Data

Coupling mechanisms	Screw-lock
Mating Cycles	≥ 500
Centre Contact	Soldered or Crimped
Cable entry	Crimp
Coupling Torque	0.7-1.1 Nm

Environmental Data

Temperature Range	-65°C to +165°C
Thermal shock	MIL-STD-202, Meth. 107, Cond. B
Corrosion	MIL-STD-202, Meth. 101, Cond. B
Vibration	MIL-STD-202, Meth. 204, Cond. B
Moisture Resistance	MIL-STD-202, Meth. 106
RoHS	compliant

Packing

Single or 100