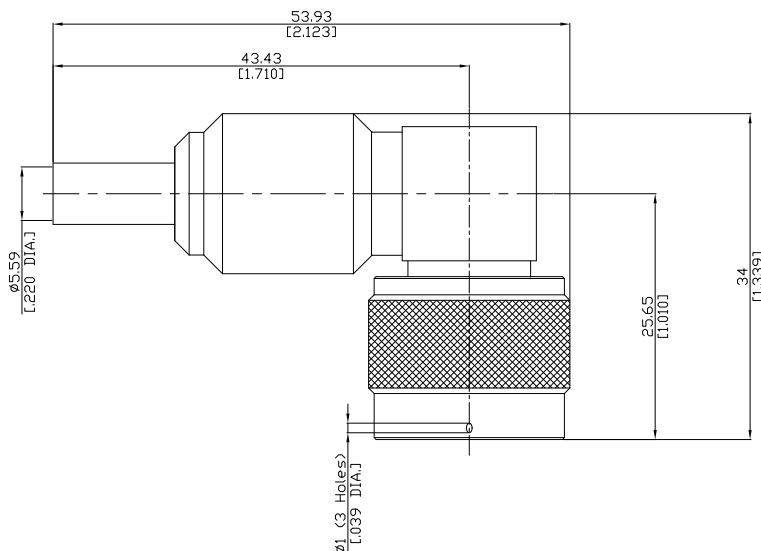




N Right Angle Cable Plug

QPL-N1C59-G142A/900



All dimensions are in mm [inch]

Tolerances according to DIN ISO 2768-mH

**Interface**

According to MIL-C-39012; MIL-STD-348A/304

**Electrical Data**

Impedance 50 Ω  
Frequency DC to 11 GHz  
VSWR (Return Loss)  $\leq 1.22$  ( $\geq 20$  dB)  
 $\leq 0.05 \times \sqrt{F}$  (GHz) dB  
Insertion Loss

- Limitations are possible due to the used cable type -

**Mechanical Data**

Coupling mechanisms Screw-lock  
Centre contact Soldered  
Cable entry Crimped

**Environmental Data**

Temperature range -65°C to +165°C  
RoHS compliant

**Material And Plating**

Connector parts	Material	Plating
Centre contact	Beryllium Copper	Gold plating(Nickel underplated)
Body	Brass	Silver
Insulator	PTFE	
Gasket	Silicone Rubber	
Coupling nut	Brass	Silver
Crimp ferrules	Brass	Silver

**Suitable Cables**

RG-142B, RG-400U

**Packing**

Single or 100