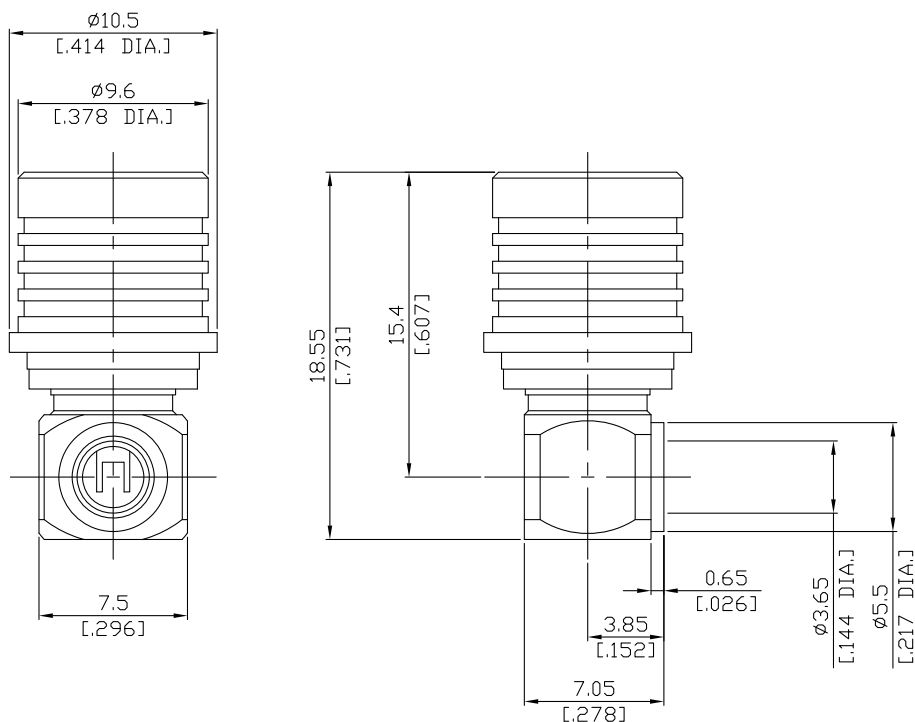


QMA Plug (Male) Right Angle Connector, Center Pin: Solder, Cable Entry: Solder Attachment
for .141, RG402 Cable DC-18GHz VSWR1.3

QMA1E59-0141A / 100



All dimensions are in mm [inch]

Tolerances according to DIN ISO 2768-mH

Interface

According to

IEC 61169-50

Electrical Data

Impedance	50 Ω
Frequency	DC to 18 GHz
VSWR (Return Loss)	≤ 1.30 (≥ 17.69 dB)
Insertion Loss	$\leq 0.05 \times \sqrt{F}$ (GHz) dB
Insulation Resistance	≥ 5 G Ω
Center Contact Resistance	≤ 3.0 m Ω
Outer Contact Resistance	≤ 2.5 m Ω
Test Voltage (at sea level)	1000 V rms
Working Voltage (at sea level)	335 V rms
RF Leakage	≥ 95 dB up to 2 GHz ≥ 80 dB up to 4 GHz ≥ 70 dB up to 6 GHz
Power handling	70 W @ 2.2 GHz (recommended)

-VSWR in application depends decisive on cable assembly process-

Material And Plating

Piece Parts	Material	Plating
Centre contact	Brass	Gold plating, 3 μ inch (Non-magnetic nickel-phosphorus underplating, 80 μ inch)
Body	Brass	Silver
Insulator	PTFE	
Coupling nut	Brass	Silver

QMA Plug (Male) Right Angle Connector, Center Pin: Solder, Cable Entry: Solder Attachment
for .141, RG402 Cable DC-18GHz VSWR1.3

QMA1E59-0141A / 100

Mechanical Data

Coupling Mechanisms	Quick Lock
Mating Cycles	≥ 100
Engagement Force	25 N typ.
Disengagement Force	20 N typ.
Retention Force for Interface	≥ 60 N

Environmental Data

Temperature Range	-40°C to +85°C
Thermal Shock	IEC 60169-1 16.4 (-40 / +85°C)
Corrosion	IEC 60169-1 16.7 (48 hrs)
Vibration	IEC 60068-2-64 random
Shock	IEC 60169-1 16.3 (96 hrs)
RoHS	compliant

Suitable Cables

.141, RG402; Rosnol RSR-141, RSF-141, EF402

Packing

Single or 100