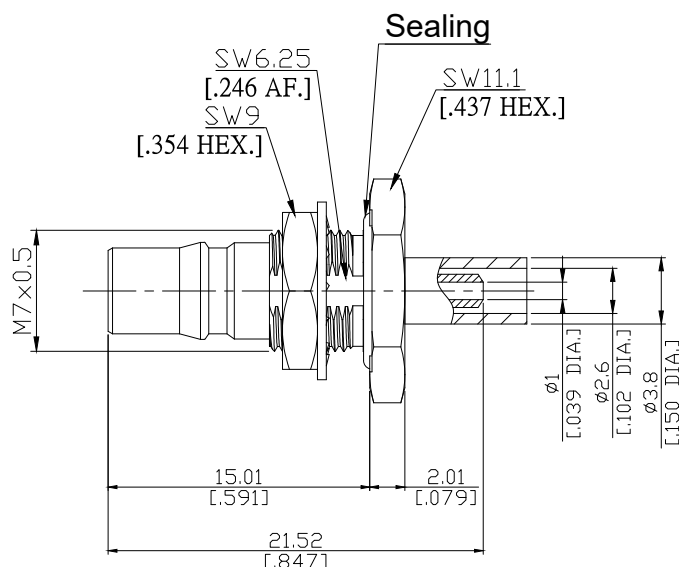
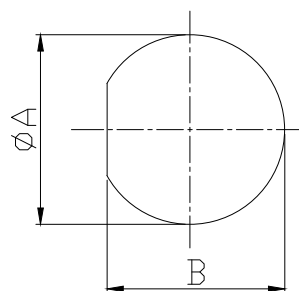


QMA Jack (Female) Connector Crimp Attachment
RG196, 1.13 Mount D Cut, DC-18 GHz VSWR1.35

QA2CA50-1.13A / 9X



Mounting Dimensions



	mm		inch	
	Max.	Min.	Max.	Min.
A	7.05	7	.277	.276
B	6.63	6.58	.261	.26

All dimensions are in mm [inch]

Tolerances according to DIN ISO 2768-mH

Interface

According to

IEC 61169-50

Electrical Data

Impedance	50 Ω
Frequency	DC to 18 GHz
VSWR (Return Loss)	≤ 1.35 (≥ 16.5dB)
Insertion Loss	≤ 0.05 x √F (GHz) dB
Insulation Resistance	≥ 5 GΩ
Center Contact Resistance	≤ 3.0 mΩ
Outer Contact Resistance	≤ 2.5 mΩ
Test Voltage (at sea level)	1000 V rms
Working Voltage (at sea level)	480 V rms

Material And Plating

Piece Parts	Material	Plating
Centre Contact	Beryllium Copper	Gold plating, 3 μinch (Non-magnetic nickel-phosphorus underplating, 80 μinch)
Body	Stainless Steel	Passivated
Insulator	PTFE	
Coupling Nut	Stainless Steel	Passivated

The facts and figures herein are carefully compiled to the best of our knowledge, but they are intended for general informational purposes only. In the effort to improve our products, we reserve the right to make changes judged to be necessary.

Rev.:
Date: 12/7/2020

Rosnol RF/Microwave Technology Co., Ltd.
www.rosnol.com; info@rosnol.com
Phone: +886-3-463-5095 / Fax: +886-3-463-5952
N-CAGE Code: SFKK0 / ISO9001 Certified

Page
1/2

QMA Jack (Female) Connector Crimp Attachment
RG196, 1.13 Mount D Cut, DC-18 GHz VSWR1.35

QA2CA50-1.13A / 9X

Mechanical Data

Coupling mechanisms	Quick-lock
Mating Cycles	≥ 100
Center Contact Captivation: axial	≥ 20 N
Centre contact	Soldered
Cable entry	Soldered
Engagement Force	25 N typ.
Disengagement Force	20 N typ.
Recommended Torque	≥ 60 N

Environmental Data

Temperature Range	-40°C to +85°C
Thermal shock	IEC 60169-1 16.4 (-40 / +85°C)
Corrosion	IEC 60169-1 16.7 (48 hours)
Vibration	IEC 60068-2-64 (random)
Damp heat (steady state)	IEC 60169-1 16.3 (96 hours)
RoHS	compliant

Packing

Single or 100

Related Document

Mounting Dimension	MD19
--------------------	------