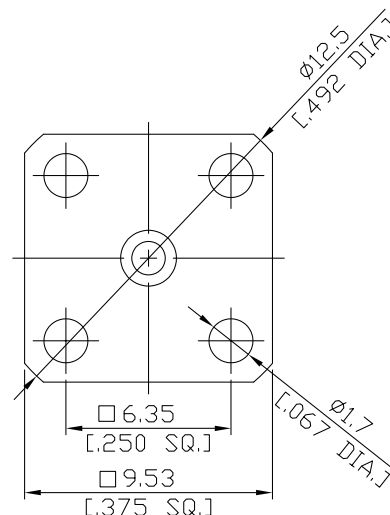
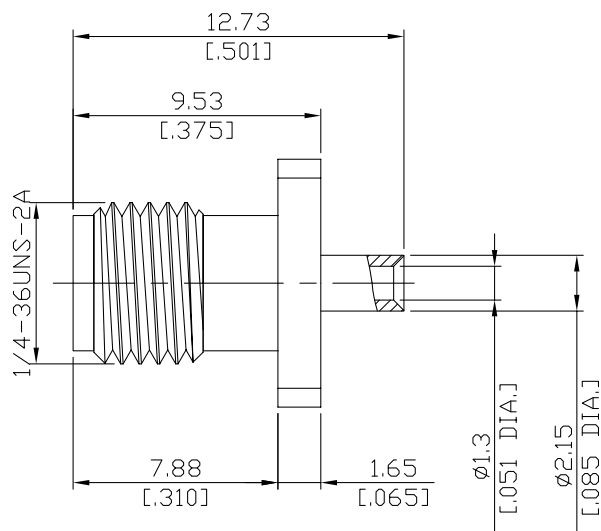


**Precision SMA (Female) Straight
4-Hole Panel Cable Jack, DC-26.5 GHz**

PCA2EBF50-0047B/9Q



All dimensions are in mm [inch]

Tolerances according to DIN ISO 2768-mH

Interface

According to IEC 60169-15; MIL-STD-348B/310

Electrical Data

Impedance 50 Ω
Frequency DC to 26.5 GHz
VSWR (Return Loss) ≤ 1.40 (≥ 15.56 dB)
Insertion Loss ≤ 0.1 × √F (GHz) dB

- Limitations are possible due to the used cable type and manufacturing process -

Mechanical Data

Coupling mechanisms Screw-lock
Centre contact Soldered
Cable entry Soldered

Environmental Data

Temperature range -65°C to +165°C
RoHS compliant

Material And Plating

Connector parts	Material	Plating
Centre contact	Beryllium Copper	Gold plating(Nickel underplated)
Body	Stainless Steel	Gold plating(Nickel underplated)
Insulator	PTFE	

Suitable Cables

Semi-Rigid .047

Packing

Single or 100

Related Document

Mounting Dimension MD118