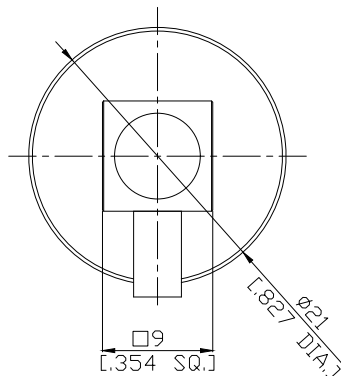
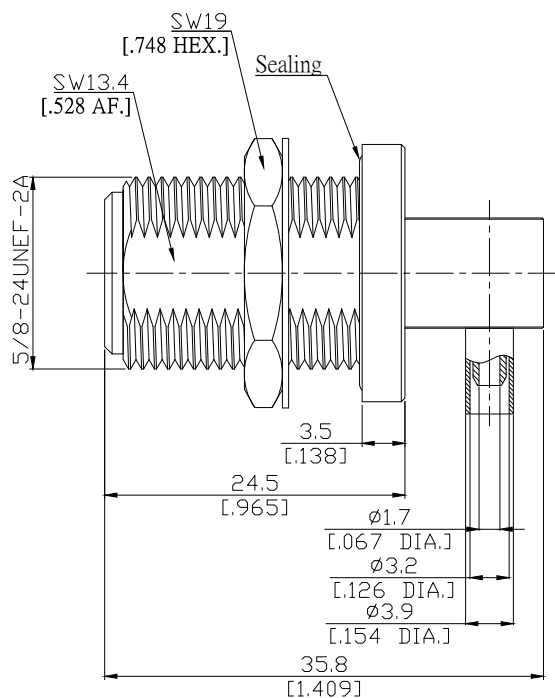
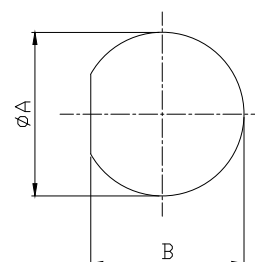


N Female Bulkhead Rightangle Connector Solder/ Crimp  
Attachment for RG316-D, RG188-D, DC-11GHz VSWR1.30

**N2CA59-G316A / H3**



Mounting Dimensions



	mm		inch	
	Max.	Min.	Max.	Min.
A	15.75	15.7	.620	.618
B	13.5	13.45	.531	.530

All dimensions are in mm [inch]

Tolerances according to DIN ISO 2768-mH

**Interface**

According to

IEC 61169-16

MIL-STD-348B/304

**Electrical Data**

Impedance	50 Ω
Frequency	DC to 11 GHz
VSWR (Return Loss)	≤ 1.3 (≥ 17.7 dB)
Insertion Loss	≤ 0.1
Insulation Resistance	≥ 5 GΩ
Center Contact Resistance	≤ 1 mΩ
Outer Contact Resistance	≤ 1 mΩ
Working Voltage	1000 V rms

- Limitations are possible due to the used cable type -

**Material And Plating**

Piece Parts	Material	Plating
Centre contact	Phosphor Bronze	Gold plating, 3 μinch (Non-magnetic nickel-phosphorus underplating, 80 μinch)
Body	Brass	Nickel
Insulator	PTFE	
Gasket	Silicone Rubber	
Ferrule	Brass	Nickel

**N Female Bulkhead Rightangle Connector Solder/ Crimp  
Attachment for RG316-D, RG188-D, DC-11GHz VSWR1.30**

**N2CA59-G316A / H3**

**Mechanical Data**

Coupling Mechanisms	Screw-Lock
Mating Cycles	≥ 500
Coupling Nut Retention	≥ 450 N
Center contact captivation: axial	≥ 28 N
Coupling Test Torque	≤ 1.7 Nm
Recommended Torque	0.7 Nm to 1.1 Nm
Centre Contact	Soldered
Cable Entry	Crimped

**Environmental Data**

Temperature Range	-40°C to +85°C
Thermal Shock	MIL-STD-202, Method 107, Condition B
Corrosion	MIL-STD-202, Method 101, Condition B
Vibration	MIL-STD-202, Method 204, Condition B
Shock	MIL-STD-202, Method 213, Condition I
Moisture Resistance	MIL-STD-202, Method 106
RoHS	compliant

**Suitable Cables**

RG316-D, RG188-D

**Weight**

N/A

**Packing**

Single or 100