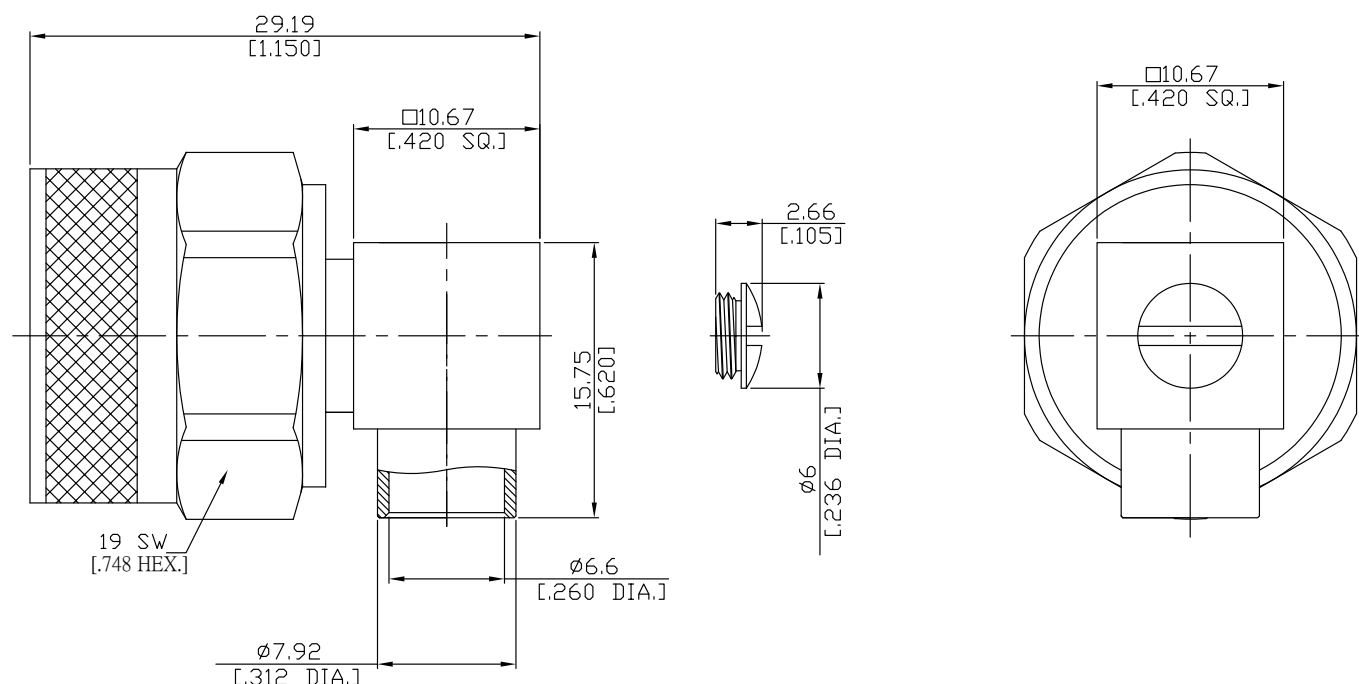


N Right Angle Cable Plug

N1E59-0250A/113



All dimensions are in mm [inch]

Tolerances according to DIN ISO 2768-mH

Interface

According to

IEC 61169-16; CECC 22210; MIL-C-39012; MIL-STD-348A/304

Electrical Data

Impedance

 $50\ \Omega$

Frequency

DC to 10 GHz

VSWR (Return Loss)

DC-6GHz: ≤ 1.25 (≥ 19.08 dB) 6-10GHz: ≤ 1.50 (≥ 13.98 dB)

Insertion Loss

$$\leq 0.05 \times \sqrt{F \text{ (GHz)}} \text{ dB}$$

- Limitations are possible due to the used cable type and manufacturing process -

Mechanical Data

Coupling mechanisms

Screw-lock

Centre contact

Soldered

Cable entry

Soldered

Environmental Data

Temperature range

-65°C to +105°C

RoHS

compliant

Material And Plating

Connector parts	Material	Plating
Centre contact	Brass	Gold plating(Nickel underplated)
Body	Brass	Gold plating(Nickel underplated)
Insulator	PTFE	
Gasket	Silicone Rubber	
Coupling nut	Brass	Nickel

Suitable Cables

Semi-Rigid .250

Packing

Single or 100

N Right Angle Cable Plug

N1E59-0250A/113

Cable Stripping Dimensions

